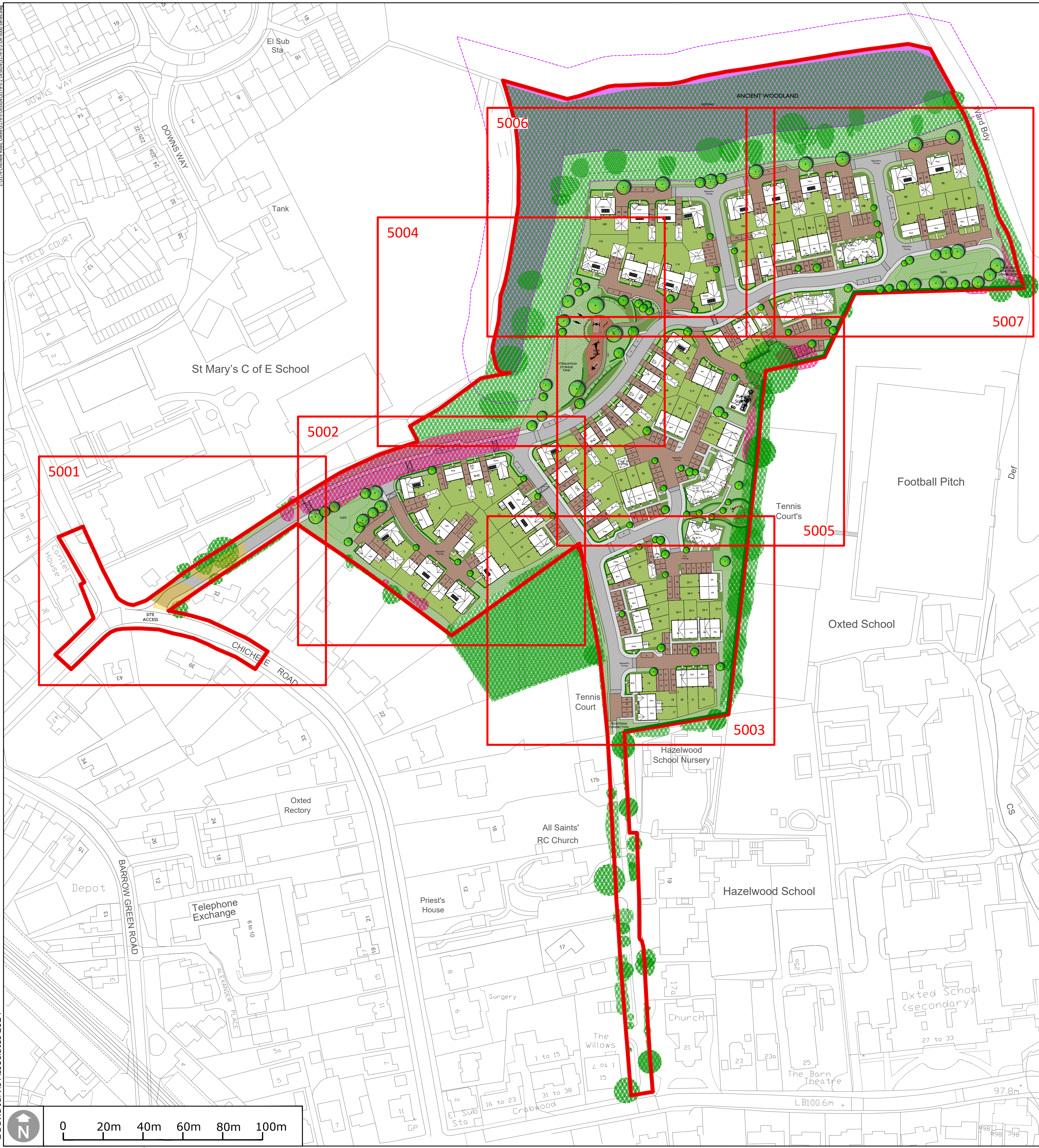


©David Jarvis Associates 2024  
 21/10/2024 10:50:00 AM 0100031675 - 0100031675 - 21/10/2024 10:50:00 AM 0100031675



**PLANTING SCHEDULE**

Species	Grth	Height	Specification	Density	Number
Acer platanoides 'Crimson Sentry'	18-20m	2500mm	Extra Heavy Standard; 3x 88; Clear Stem min. 200cm	0.4ctr 2x Stag. @ 0.3m off.	153
Amelanchier alnifolia	14-16m	4500mm	Extra Heavy Standard; Clear Stem 175-200; 3x 88	0.4ctr	8
Betula pendula	14-16m	4500mm	Heavy Standard; Clear Stem 175-200; 3x 88	0.4ctr	8
Carpinus betulus 'Tran's Fontaine'	20-25m	5500mm	Sem. Mature; 3x 88; Clear Stem min. 200cm	0.3ctr 2x Stag. @ 0.15m off.	676
Fagus sylvatica 'Purpurea'	14-16m	4500mm	Extra Heavy Standard; 3x 88; Clear Stem min. 200cm	0.3ctr 2x Stag. @ 0.15m off.	126
Magnolia 'Satan'	14-16m	4500mm	Extra Heavy Standard; 3x 88; Clear Stem 150-175cm	0.4ctr	8
Magnolia x loebneri 'Merrill'	14-16m	4500mm	Extra Heavy Standard; 3x 88; Clear Stem 150-175cm	0.4ctr	8
Malus 'Royal Wynd'	20-25m	4500mm	Extra Heavy Standard; Clear Stem min. 200cm	0.4ctr	8
Malus 'Evereste'	14-16m	4500mm	Heavy Standard; Clear Stem min. 200cm	0.4ctr	8
Malus 'Soldier Horse'	12-14m	3500mm	Heavy Standard; Clear Stem min. 200cm	0.4ctr	8
Prunus cerasifera 'Naza'	14-16m	4500mm	Extra Heavy Standard; Clear Stem 175-200; 3x 88	0.4ctr	8
Prunus subhirtella 'Autumnalis Royal'	14-16m	4500mm	Extra Heavy Standard; Clear Stem min. 200cm	0.4ctr	8
Sorbus astralis	12-14m	3500mm	Heavy Standard; Clear Stem 175-200; 3x 88	0.4ctr	8
Sorbus aucuparia 'Asplenifolia'	16-18m	4500mm	Extra Heavy Standard; 3x 88; Clear Stem min. 200cm	0.4ctr	8
Tilia cordata 'Winter Orange'	18-20m	4500mm	Extra Heavy Standard; Clear Stem 200; 3x 88	0.4ctr	8

**FORMAL HEDGING**

Species	Height	Pot Size	Specification	Density	No.
Carpinus betulus	100-125cm		1+2; Feathered; B	0.4ctr 2x Stag. @ 0.3m off.	26
Elaeagnus x ebbingei	60-80cm	5-7.5L	Branched; 4 brks; C	0.4/m	172
Escallonia 'Iveyi'	60-80cm	5L	Bushy; 5 brks; C	0.4ctr	740
Fagus sylvatica	60-80cm	1+2	Transplant - seed raised; B	0.3ctr 2x Stag. @ 0.15m off.	676
Fagus sylvatica 'Purpurea'	60-80cm	1+2	Transplant - seed raised; B	0.3ctr 2x Stag. @ 0.15m off.	126
Ligustrum ovalifolium	60-80cm	5L	Branched; 7 brks; C	0.4ctr	780

**MIXED NATIVE HEDGING**

Species	Height	Specification	Density	No.
Cornus sanguinea	60-80cm	1+1; Transplant - seed raised; Branched; 3 brks; B	1ctr 2x Stag. @ 0m off.	153
Crataegus monogyna	60-80cm	1+1; Transplant - seed raised; B	1ctr 2x Stag. @ 0m off.	189
Fagus sylvatica	60-80cm	1+1; Transplant - seed raised; B	1ctr 2x Stag. @ 0m off.	61
Ligustrum vulgare	80-100cm	0/2; Cutting; Branched; 3 brks; B	1ctr 2x Stag. @ 0m off.	61
Prunus spinosa	80-100cm	1+2; Transplant - seed raised; Branched; 3 brks; B	1ctr 2x Stag. @ 0m off.	189
Rosa canina	60-80cm	1+1; Transplant - seed raised; Branched; 3 brks; B	1ctr 2x Stag. @ 0m off.	61
Viburnum lantana	60-80cm	1+2; Transplant - seed raised; Branched; 3 brks; B	1ctr 2x Stag. @ 0m off.	61
Viburnum opulus	60-80cm	1+2; Transplant - seed raised; Branched; 3 brks; B	1ctr 2x Stag. @ 0m off.	177

**BLOCK PLANTING**

Species	Height	Pot Size	Specification	Density	No.
Hebe rakaiensis	15-17.5L	3L	Bushy; 2 brks; 4/m	76	110
Lavandula angustifolia 'Hidcote'	20-30cm	3L	Bushy; 5 brks; C	6/m	125
Leucocoryne aestivum	Grade 7/8			20/m	714
Lonicera pileata	60-80cm	5L	Bushy; 5 brks; C	6/m	167
Muscari armeniacum	Grade 6/7			40/m	1426

**MIXED PLANTING**

Species	Height	Pot Size	Specification	Density	No.
Agastache 'Black Adder'	0.5L	Full Pot; C		6/m	83
Anemone x hybrida 'Honorine Jobert'	2L	Full Pot; C		4/m	96
Calamagrostis x acutiflora 'Karl Foerster'	3L	Full Pot; C		4/m	130
Carex oshimensis 'Evergold'	2L	Full Pot; C		5/m	220
Chiosya 'Aztec Pearl'	40-60cm	7.5L	Bushy; 6 brks; C	1/m	153
Cornus stolonifera 'Flaviramea'	60-80cm	3L	Branched; 4 brks; C	2/m	59
Deschampsia cespitosa 'Goldschleier'	2L	Full Pot; C		3/m	193
Elaeagnus x ebbingei	60-80cm	5-7.5L	Branched; 4 brks; C	1/m	36
Euonymus fortunei 'Dart's Blanket'	3L	Bushy; 5 brks; C		5/m	8
Genista lydia	5-7.5L	Bushy; 7 brks; C		1/m	34
Geranium 'Orion'	2L	Full Pot; C		4/m	312
Geranium phaeum 'Album'	2L	Full Pot; C		5/m	110
Geranium x magnificum	2L	Full Pot; C		5/m	105
Hebe 'Green Globe'	20-30cm	5L	Bushy; 9 brks; C	5/m	275
Hebe 'White Gem'	30-40cm	5-7.5L	Bushy; 7 brks; C	2/m	48
Hebe rakaiensis	60-80cm	1+2; Transplant - seed raised; Branched; 3 brks; B	1ctr 2x Stag. @ 0m off.	110	
Hypericum 'Hidcote'	30-40cm	5L	Bushy; 7 brks; C	2/m	203
Kniphofia 'Percy's Pride'	2L	Full Pot; C		3/m	54
Koeleria glauca	0.5L	Full Pot; C		4/m	174
Lavandula angustifolia 'Alba'	20-30cm	3L	Bushy; 5 brks; C	6/m	124
Lavandula angustifolia 'Hidcote'	20-30cm	3L	Bushy; 5 brks; C	6/m	164
Lavandula angustifolia 'Hidcote'	20-30cm	5L	Bushy; 7 brks; C	2/m	102
Lavandula angustifolia 'Rosea'	20-30cm	3L	Bushy; 5 brks; C	6/m	84
Lavandula x intermedia 'Grosso'	20-30cm	3L	Bushy; 5 brks; C	4/m	58
Liriodendron 'Monroe White'	5L	Bushy; 8 brks; C		2/m	111
Lonicera pileata	5L	Bushy; 8 brks; C		2/m	11
Lonicera pileata	5L	Bushy; 8 brks; C		2/m	18
Miscanthus sinensis 'Morning Light'	5-7.5L	Full Pot; C		3/m	105
Nepeta 'Six Hills Giant'	2L	Full Pot; C		5/m	105
Nepeta racemosa 'Walker's Low'	3L	Full Pot; C		4/m	137
Pennisetum setaceum 'Rubrum'	3L	Full Pot; C		5/m	54
Perovskia 'Little Spire'	2L	Full Pot; C		4/m	31
Philadelphus 'Manteau d'Hermine'	30-40cm	5-7.5L	Branched; 5 brks; C	2/m	138
Philadelphus 'Manteau d'Hermine'	30-40cm	5-7.5L	Branched; 5 brks; C	2/m	8
Polystichum polybipharum	3L	Full Pot; C		3/m	98
Prunus laurocerasus 'Otto Luyken'	40-60cm	5-7.5L	Bushy; 5 brks; C	4/m	21
Rosa 'Ballera'	30-40cm	2L	Cutting; Bush; 3 brks; C	3/m	131
Rosa 'The Fairy'	30-40cm	2L	Cutting; Bush; 3 brks; C	4/m	159
Sarcococca hookeriana digyna	30-40cm	5L	Bushy; 6 brks; C	3/m	161
Selectia autumnalis	Full Pot; C			6/m	84
Stachys byzantina 'Silver Carpet'	2L	Full Pot; C		6/m	169
Stipa gigantea	2L	Full Pot; C		3/m	105
Taxus baccata 'Summergold'	5-7.5L	Bushy; C		5/m	83
Verbena bonariensis	2L	Full Pot; C		5/m	40
Vinca minor 'Gertrude Jekyll'	2L	Several Shoots; 3 brks; C		8/m	345

**KEY**

- APPLICATION BOUNDARY**: DLF PM 27 Ecosward plus @ 25g/m<sup>2</sup>
- GREENSPACE: AMENITY**: DLF PM 27 Ecosward plus @ 25g/m<sup>2</sup>
- GREENSPACE: SPECIES-RICH GRASSLAND**: Emorsgate EM2 Standard General Purpose Meadow Mixture @ 4g/m<sup>2</sup>
- GREENSPACE: FLOWERING LAWN**: Emorsgate E11 Flowering Lawn Mixture @ 4g/m<sup>2</sup>
- GREENSPACE: PRIVATE**
- GREENSPACE: DAMP GRASSLAND**: Emorsgate EM2 Standard General Purpose Meadow Mixture @ 4g/m<sup>2</sup>
- GREENSPACE: PLANTED BEDS**: See Planting Schedule on DR-5000 for details
- TREES: PROPOSED**: See Planting Schedule on DR-5000 for details
- HEDGE: PROPOSED**: See Planting Schedule on DR-5000 for details
- EXISTING VEGETATION RETAINED**: Existing hedgerows to be gapped up & reinforced as per LIMP
- EXISTING VEGETATION REMOVED**
- NO DIG CONSTRUCTION**: Hard surfaces within existing tree root protection areas to be specialist construction
- ANCIENT WOODLAND WITH OFFSET**: 15m offset from ancient woodland to remain undeveloped
- BITMAC: VEHICULAR**: To Engineer's design & specification
- BITMAC: PEDESTRIAN**: To Engineer's design & specification
- CONCRETE BLOCK PAVING**: Private Driveways - Marshalls Tegular Block Paving, Colour Traditional
- CONCRETE PAVING SLABS**: Private Footpaths - Marshalls Saxon Paving Slabs, Textured Natural 600mm x 600mm
- CONCRETE BLOCK PAVING**: Marshalls Conservation Setts, Silver Grey, 150mm x 150mm
- CHIPPING TO DUST FOOTPATH**: CEDD Footpath Gravel, Colour Gold
- SAFER SURFACING: BONDED RUBBER MULCH**: PlaySmart JungleMulch 'Rustic'
- REAR GARDEN ACCESS GATE**: To Architect's design & specification
- BIN COLLECTION POINT**: To Architect's design & specification
- LITTER BIN**: Woodscape 112 lockable square litter bin with fixed top
- TIMBER BOLLARD**: Broxap Domed Square Timber Bollard Product Ref: BX17
- BENCH**: Kompan Anita Bench with Backrest Product Ref: PAR1051

**Notes**

Related Drawings: DIA Drawing based on  
 - Cooper Baillet 'CB\_36\_313\_001 Planning Layout Rev D' rec'd 2024-08-01 @ 15:27hrs  
 - ACD Environmental 'CALA14033-03Axx.dwg' rec'd 2023-10-06 @ 11:53hrs  
 - Motion Transport '1907029-01G [Proposed Access Arrangements] for Issue.dwg' rec'd 2023-10-05 @ 10:38hrs  
 - Motion Transport '2205025-0501-B-Drainage Strategy.dwg' rec'd 2023-10-18 @ 16:23hrs

Issue: Drawn by David Jarvis Associates Limited (CROWN COPYRIGHT. ALL RIGHTS RESERVED 2024 LICENCE NUMBER 0100031675). This drawing is for Planning purposes only - Do not use this drawing for construction. The information contained in the drawing should be used as a guide to the final forms and finishes of the landscape scheme. Any revisions to be approved by the Client and Local Authority

Setting out: refer to Engineers for information regarding setting out. In the event of discrepancy refer to Engineers in the first instance.

Survey: Original survey provided by the Client.

Services: Where possible these are identified on the drawings but, for the avoidance of doubt all services/utility locations should be considered indicative until identified on site. To ensure those services / utilities shown are current refer to the original survey provider or utilities designer or Client for confirmation and further information regarding easements. In the event of new services being installed refer to the appointed Engineer. It is recommended that hazard warning tape 'danger electric cable' / 'danger services' to be installed over all service routes (to remain on site) to current BS guidelines (BS7671).

Lighting: Refer to lighting engineers drawings.

Planting: Plant species are selected and located in line with consideration of the site conditions, NHC guidelines and discussions with the Local Authority and design team. All plants and planting procedure to conform to the David Jarvis Associates Limited Landscape Specification that will accompany the Construction issue drawings. No species or plant location is to be varied without prior consent of the Landscape Architect.

Bioscience: All plant stock to be sourced from a supplier certified to be pest and disease free and in accordance with Plant Passport / Animal and Plant Health Agency (APHA) and current DEFRA requirements. Supplier information / certification to be retained for a period of not less than 12 years and must be made available upon request.

Foundations: Developers / Contractors to ensure that all foundations (buildings and external walls) are designed and constructed so as to take into account, at the time of maturity, any existing or proposed trees, hedgerows or other vegetation on the application site or existing vegetation on land adjoining the site at the time of construction and any trees felled or hedgerows removed on or adjacent to the site during the previous 15 years. For this purpose the developer / contractors will submit all relevant details to the authority dealing with the Building Regulations Certificate.

Design Levels: Refer to Engineers where design levels are not shown.

CDM: Drawings to be read in conjunction with Designers risk assessment. Potential risks above that of those associated with the general construction typical to the drawing are identified below.

**PLANTING NOTES**

- All species to be planted at the numbers and densities shown.
- Species to be distributed randomly throughout mixed planting areas.
- No block or row planting within mixed planting areas permitted.
- No plant substitutions, including cultivar for cultivar or species for species, permitted without DJA approval.

Drawing Revision

Rev.	Date	Description	Drawn	Checked
P5	22/08/2024	Added additional trees	GR	GR
P4	16/08/2024	Amended following Lichfields comments	GR	GR
P3	05/08/2024	Amended to latest layout.	IE	GR
P2	20/07/2023	Amended to latest layout.	IE	GR
P1	13/10/2023	First draft issued to client.	AB/ED	GR

Status: **PLANNING**

**DAVID JARVIS ASSOCIATES**

DAVID JARVIS ASSOCIATES LIMITED  
 1 Temponon Street Swindon Wiltshire SN1 5DT  
 t: 01793 612173  
 e: mail@ davidjarvis.biz  
 w: www.davidjarvis.biz

Client: **CALA HOMES (SOUTH HOME COUNTIES) LIMITED**

Project: **LAND AT CHICHELE ROAD, OXTED**

Drawing Title: **LANDSCAPE MASTERPLAN**

Scale	Sheet Size	Date Plotted
1:1000	A1	22/08/2024

Client Ref.	Drawing Ref.	Drawing No.	Version
-	3179-5-2	DR-5000	P5