

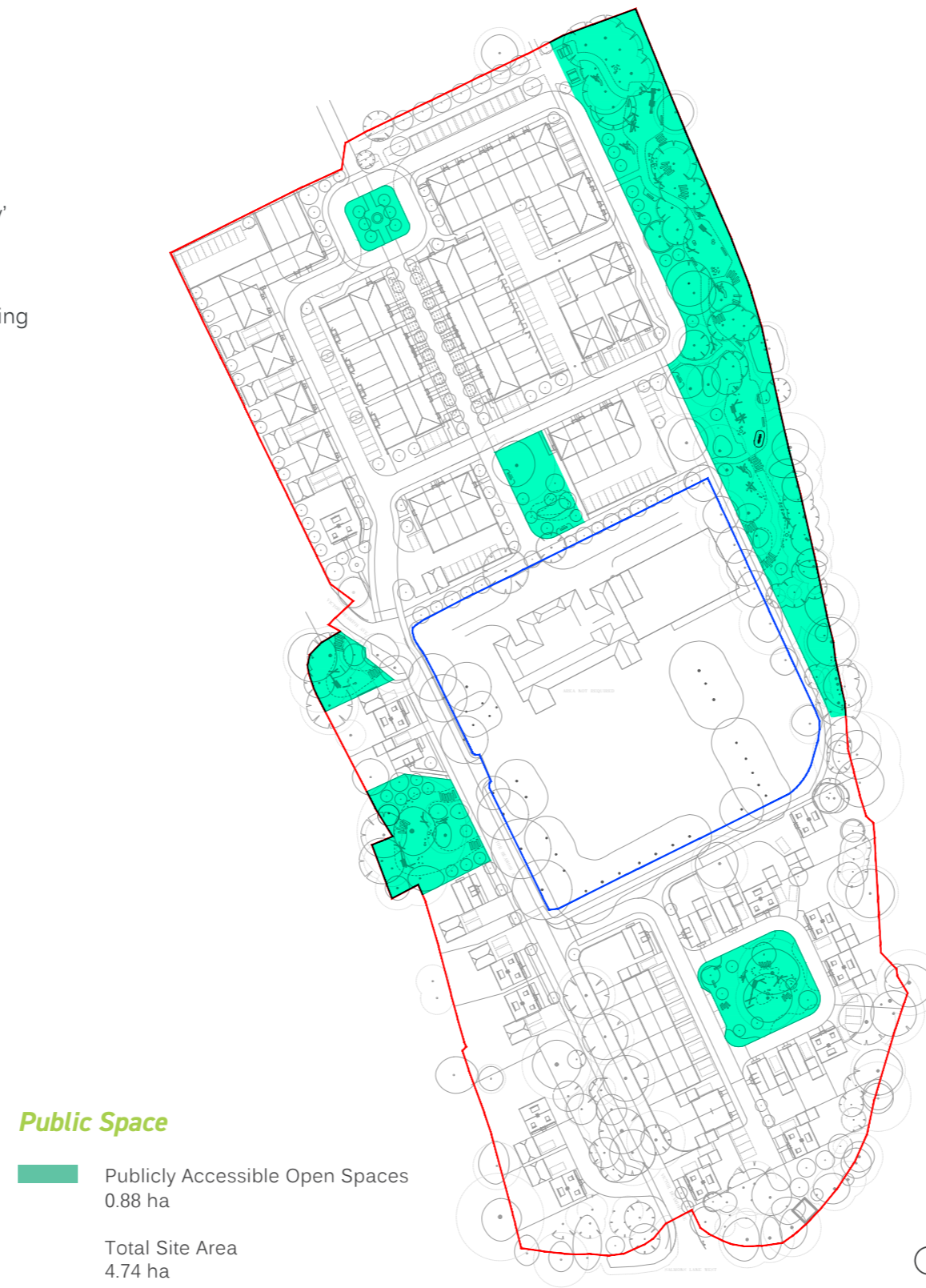
LANDSCAPE STRATEGIES

Public Space

The publicly accessible open space plan consists of multiple areas proportionately distributed throughout the site.

These publicly open areas have opportunities for both formal and informal play elements primarily utilising 'play on the way' elements.

Opportunities for a variety of seating throughout the public realm, as well as open lawn to create a variety of use for varying age groups.



LANDSCAPE STRATEGIES

Aspirational Montage - Residential Laneway Perspective



LANDSCAPE STRATEGIES

Aspirational Montage - Play Trail Perspective



LANDSCAPE STRATEGIES

Play Strategy

The proposed landscape concept will look to provide play across the site in a play network with 'play on the way' opportunities connecting trails and adventure routes with larger play elements.

To link with the proposed urban greening and SUDS strategies the play offerings will utilise naturalistic timber elements.

Key design initiatives include:

- Ensuring play spaces and routes are well observed through passive surveillance.
- Multi-functional open lawn spaces allowing for a range of uses and flexibility.
- A series of play pockets and small scale play on the way opportunities will be part of a wider play network linking across site and to beyond.

All play equipment to be confirmed at the next stage.



- Play**
- Open lawn / Rolling or mounded lawn
 - 'Play on the way'
 - Fixed Play Apparatus
 - Nature Play - Imaginative Woodland Zone



LANDSCAPE STRATEGIES

Hard Landscape & Furniture Strategy

A variety of surface materials have been selected to define the various functions of the landscape spaces, reinforce the hierarchy of road and pedestrian pathways, and define areas of shared vehicular/pedestrian use from areas restricted to pedestrian use only.

The hard landscape materials used will be robust and hard wearing and of a quality appropriate to the site. The materials selected for the palette will convey a unifying character to the development and will visually integrate the local context. Consideration has been given to the appropriateness of the materials regarding place making and their long-term performance and sustainability.

The proposed furniture palette will be of a similar high quality and robust in nature to ensure longevity and product use. The leafy nature of the site lends itself to a more naturalistic palette of products.

All surface materials and furniture to be confirmed at the next stage.



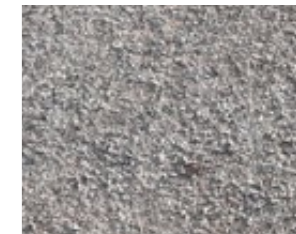
Surfaces Palette



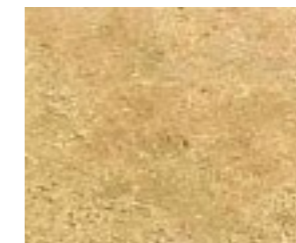
Permeable tarmac (Vehicular) - Road



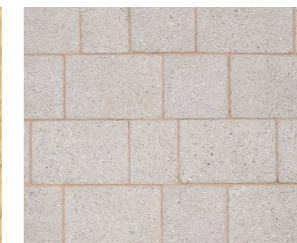
Permeable tarmac - Driveway



Permeable tarmac - Path



Hoggins gravel - Footpath



Permeable Block paving Type 1 Parking courts



Permeable Block paving Type 2 Crossing points

Indicative Furniture Palette



Timber bench with backrest



Timber litter bin



Timber bollard

LANDSCAPE STRATEGIES

Green & Blue Infrastructure Strategy

The site currently has extensive existing green infrastructure with a large number of mature trees giving the site a green leafy feel.

New trees and planting will be proposed to enhance the existing condition, increase urban greening and aid in way-finding and cross site connections.

Key design initiatives include:

- The Kenley Aerodrome Conservation Area dictates that the retention of the existing tree network is a key consideration when considering any development and so the retention of existing trees on-site where possible is paramount.
- Tree retention also plays a role in mitigating the effects of climate change through carbon sequestration. The larger the tree, the greater the carbon store it locks away.
- Enhancing on-site biodiversity and ecologies through a varied planting palette and biodiversity interventions
- Demarcating access routes and framing key views.
- Creating a strategic open space network including a series of green spaces providing for a variety of uses.
- Promoting active lifestyle with integrated natural playful spaces within the site.
- Utilising blue infrastructure features where possible, including rain gardens, swales, and permeable paving.

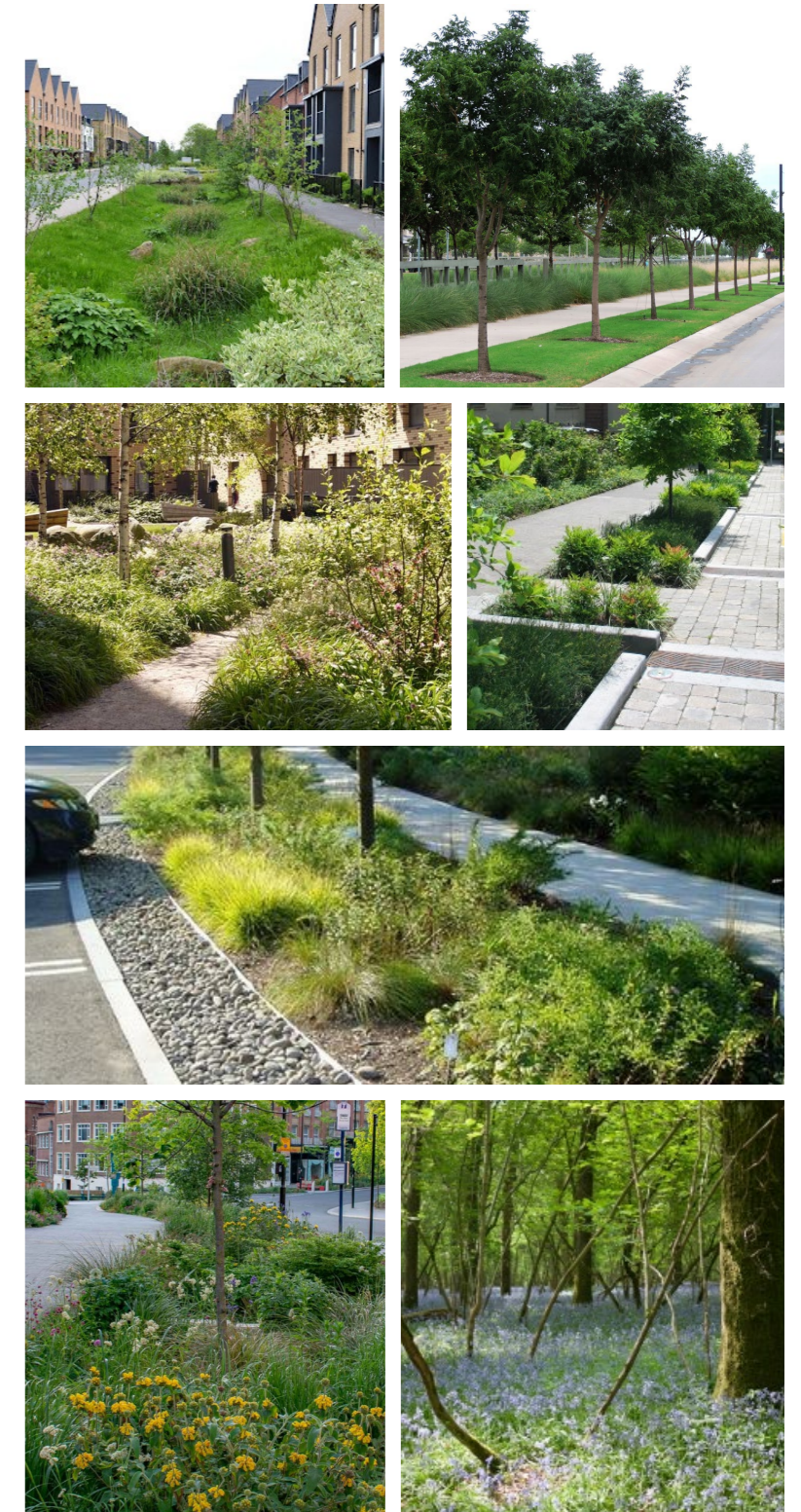
All SUDs features to be confirmed at the next stage.

Green Infrastructure

- Existing green assets
- Primary green link
- Secondary green link
- Anchor green space
- Pocket green space

Blue Infrastructure

- Permeable car parking
- Rain gardens & swales



LANDSCAPE STRATEGIES

Tree Strategy

The approach to tree planting for the site is to provide a robust and diverse range of tree species for way-finding, enhanced biodiversity, visual amenity, green infrastructure links and an enhanced microclimate for pedestrians. The tree planting strategy has been chosen to provide ecological benefits and be heavily weighted with native species.

Larger trees will be located towards the fringes of the site boundary and away from residential properties, to aid in way-finding. *Prunus avium* is proposed at key junctions to act as a marker for intersections.

Trees have been selected to provide an ecological benefit, especially for dormice which have been recorded on site. The *Sambucus nigra* provides food for dormice as well as nectar for a variety of insects.

The following tree strategy diagram and palette are shown indicatively and locations may vary at the next stage.

All proposed trees to be confirmed at the next stage.

Proposed Tree Typologies

- Prunus avium
- Sorbus acuparia
- Salix caprea
- Betula pendula
- Acer campestre
- Sambucus nigra
- Crataegus x lavalleyi 'Carrierei'
- Tilia cordata
- Quercus robur
- Platanus x acerifolia

