



Our Local Plan

**Tandridge District
Infrastructure Delivery Plan
January 2019**

Tandridge
District Council

Contents

1	Introduction.....	4
1.1	Purpose of the Infrastructure Delivery Plan	4
1.2	Structure of the Infrastructure Delivery Plan.....	5
2	Definition of Infrastructure	6
3	Infrastructure Planning Context.....	9
3.1	National Planning Policy Framework.....	9
3.2	Planning Practice Guidance.....	10
3.3	Our Local Plan 2033.....	10
3.4	Area Action Plans.....	14
3.5	Neighbourhood Plans.....	14
4	Infrastructure Funding Mechanisms.....	16
4.1	Community Infrastructure Levy.....	16
4.2	Section 106 Planning Agreements.....	16
4.3	Section 278 Highway Agreements.....	17
4.4	Planning Conditions.....	17
4.5	Other Funding Sources.....	17
5	Cross-boundary Infrastructure Needs.....	18
6	Summary of Key Infrastructure Requirements.....	19
7	Infrastructure Costs.....	20
8	Appendix A - Strategic Infrastructure Plan.....	22
	Cross-boundary Requirements.....	23
	District Wide Requirements.....	25
	Garden Community Requirements	30
	Bletchingley Requirements	34
	Burstow Requirements.....	36
	Caterham on the Hill Requirements.....	41
	Caterham Valley Requirements.....	45
	Chaldon Requirements	50
	Chelsham and Farleigh Requirements	52
	Crowhurst Requirements	54
	Dormansland Requirements	55
	Felbridge Requirements	57
	Godstone Requirements	59
	Horne Requirements	61

Tandridge District Infrastructure Delivery Plan – January 2019

Limpsfield Requirements	62
Lingfield Requirements	64
Nutfield Requirements	66
Outwood Requirements	68
Oxted Requirements	70
Tandridge (Parish) Requirements	74
Tatsfield Requirements	76
Titsey Requirements	77
Warlingham Requirements	78
Whyteleafe Requirements	80
Woldingham Requirements	87

What does this document <u>do</u>	What this document <u>does not do</u>
<p>Sets out the known infrastructure needs of the district, and identifies where improvements are required</p>	<p>It does not limit the infrastructure that may be sought in order to support development coming forward as part of the Local Plan</p>
<p>Provides an evidence base for Our Local Plan</p>	<p>Does not influence, establish or impact upon the Local Plan Spatial Strategy or its objectives</p>
<p>A live document that will be updated as and when more information is obtained</p>	

1 Introduction

The provision of infrastructure in the right location at the right time is important for our communities and the district as a whole. The delivery of the correct level and type of infrastructure is essential to support new homes, economic growth and for the creation of sustainable communities.

Planning for infrastructure helps to ensure that there is a common understanding between service providers, developers, local communities, businesses, neighbouring authorities and the District Council as to the local infrastructure needs and to ensure that is provided for in tandem with planned development within the district. Where possible, the Infrastructure Delivery Plan (IDP) sets out estimated costs associated with each infrastructure project/program.

It should be noted that an IDP is a live document which can be updated as additional information is received, feasibility assessments are undertaken, bidding for funding are successful and infrastructure is delivered.

1.1 Purpose of the Infrastructure Delivery Plan

This document supports the objectives outlined in Our Local Plan 2033 and provides detail on infrastructure needs within the district in order to support new development. Our Local Plan 2033 sets out locations for development and the policies required to ensure sustainable communities are created. To assist in achieving sustainable communities, the IDP identifies the infrastructure requirements for the district, the priority of the infrastructure to be delivered and how it will be funded with estimated cost, where this is known. It also plays an important role in the preparation and adoption of the Community Infrastructure Levy (CIL) Charging Schedule for Tandridge by providing evidence of a need for infrastructure investment.

There are four core purposes of the Infrastructure Delivery Plan:

- To provide evidence for the Local Plan by identifying the infrastructure required to support the delivery of development during the plan period;
- To form the high-level justification for a CIL charge by evidencing an infrastructure need in Tandridge;
- To provide evidence for Section 106 planning obligations by indicating suitable infrastructure schemes to which developer contributions can be directed;
- To align infrastructure delivery with infrastructure provider's strategies and forward plans to ensure coherent planning.

The Infrastructure Delivery Plan seeks to identify the:

- Infrastructure schemes needed to support new development;

- Timeframe of infrastructure provision; within 1-5 years, 6 – 10 years 11 years plus, or desirable¹;;
- Estimated costs of infrastructure;
- Funding arrangements ²; and
- Delivery Partner

The IDP also considers if an infrastructure scheme is required in order to support the Local Plan, The South Godstone Garden Community Area Action Plan, Neighbourhood Plans or forms part of other identified community aspirations.

1.2 Structure of the Infrastructure Delivery Plan

The Infrastructure Delivery Plan covers the whole of Tandridge District. Whilst there is a focus on infrastructure requirements of the district, cross-boundary infrastructure needs have also been considered where it is appropriate to do so. There is likely to be a need for joint working in order to deliver these infrastructure schemes.

Appendix A identifies infrastructure provision and potential funding sources and these are grouped into various infrastructure categories by parish. Appendix A also includes a section on District wide infrastructure, which could be junctions along the A22, and a section on infrastructure for the Garden Community.

It identifies the key issues for the district and identifies what infrastructure may be required to support development. Where specific infrastructure schemes are known these are identified and are costed so far as has been possible.

It should be noted that infrastructure needs are discussed in broad terms and other infrastructure may be required in order to enable a development to go ahead. This may be as a result of changing legislation, Government priorities as well as windfall planning applications and changes in infrastructure providers service plans.

¹ Desirable refers to infrastructure that is required but funding has not been secured, it is not directly linked to an allocation and has not come from the evidence base.

² This includes what sites will contribute to funding the infrastructure through s106/s278.

2 Definition of Infrastructure

There is a range of different types of infrastructure which are often provided by various organisations and funded through different mechanisms. As such it is helpful to establish how infrastructure can be defined.

There are three main types of infrastructure and these are physical, social and green/blue infrastructure.

- Physical infrastructure includes transport, energy, utilities, water and waste provision.
- Social infrastructure includes community services such as health, education, emergency services and leisure such as sports and recreation.
- Green/Blue infrastructure is a connected network of multifunctional greenspace, both urban and rural, that delivers a wide range of environmental, social and economic benefits, including promoting ecosystem services and improving quality of life. The Blue infrastructure is a subset of Green Infrastructure and relates specifically to bodies of water, including rivers, streams, brooks and ponds.

The Planning Act 2008 (as amended) sets out a list of the infrastructure that can be funded through the Community Infrastructure Levy, however, items not on this do not necessarily fall outside the definition of infrastructure. Section 216(1) and (2) provides:

216 Application

- (1) Subject to sections 216A(1), 216B(2) and 219(5), CIL regulations must require the authority that charges CIL to apply it, or cause it to be applied, to supporting development by funding the provision, improvement, replacement, operation or maintenance of infrastructure.
- (2) In this section (except subsection (3)) and sections 216A(2) and 216B(2) “infrastructure” includes –
 - (a) roads and other transport facilities,
 - (b) flood defences,
 - (c) schools and other educational facilities,
 - (d) medical facilities,
 - (e) sporting and recreational facilities, and
 - (f) open spaces.

For the purposes of this IDP, the definition of key infrastructure categories, and the elements within each group, is set out in the table below (Figure 1):

Infrastructure Category	Elements Relevant to Tandridge
Transport	<ul style="list-style-type: none"> • Road Networks • Rail Networks • Bus Services • Cycling, Walking and equestrian routes • Other public rights of way (PROW) • Parking Facilities
Education	<ul style="list-style-type: none"> • Pre-School and Nursery Schools • Primary education • Secondary education • Adult education • Special Educational Needs
Health	<ul style="list-style-type: none"> • GPs, health centres and other community care facilities such as day-care centres • Mental health hospitals and other support (for example dual diagnosis, dementia services etc) • Acute and General Hospitals • Dental practices that accept NHS patients • Social Care
Community	<ul style="list-style-type: none"> • Supported and extra care accommodation • Social and Community Facilities including buildings, for example village halls • Cultural facilities such as Arts Centres and Museums • Libraries • Sports centres and other recreation facilities • Sports pitches – can also fall into Green Infrastructure • Play space – can also fall into Green Infrastructure • Emergency services (ambulance, fire and rescue, police) • Libraries • Places of worship • Cemeteries • Waste management and disposal, including recycling facilities

<p>Green Infrastructure and Habitats Regulations mitigation</p>	<ul style="list-style-type: none"> • Interventions necessary to mitigate the effects of development on nature conservation sites • Natural Greenspace– where this need arises as a result of Habitats Regulations • Management and Monitoring of EU designated sites where this need arises as a result of Habitats Regulations • Open spaces, parks and Amenity Green Space • Allotments • Biodiversity and nature conservation
<p>Flood Alleviation</p>	<ul style="list-style-type: none"> • Flood defences and flood management schemes – Green Infrastructure can also have a role to play in flood alleviation
<p>Utilities</p>	<ul style="list-style-type: none"> • Electricity and gas distribution • Energy generation and peaking stations • Water Supply • Wastewater Treatment and Sewerage • Telecommunications and Broadband

Figure 1: Key Infrastructure Categories for Tandridge District IDP

3 Infrastructure Planning Context

3.1 National Planning Policy Framework

The National Planning Policy Framework (NPPF) published in March 2012 sets out the Government's planning policies and planning guidance for plan-making and decision-taking. At the time of writing this IDP, Central Government are undertaking a consultation on revising the NPPF with some implications for infrastructure. Once the outcome of that consultation is known this IDP can consider the new NPPF and determine whether a need to update the IDP is necessary.

It is a requirement of the NPPF for local planning authorities to set out the strategic priorities for the area in a Local Plan. The Local Plan should include strategic policies to deliver the provision of infrastructure for transport, telecommunications, waste management, water supply, wastewater, flood risk and coastal change management, and the provision of minerals and energy (including heat); and the provision of health, security, community and cultural infrastructure and other local facilities.

The NPPF also requires local planning authorities to plan positively for the development and infrastructure required in the area to meet the objectives, principles and policies of the NPPF.

Local planning authorities should work with other authorities and providers to assess the quality and capacity of infrastructure and its ability to meet forecast demands. Local planning authorities should also take account of the need for strategic infrastructure including nationally significant infrastructure within their areas.

It is important for local planning authorities to understand district-wide development costs at the time the Local Plan is prepared, so far as it is possible, based on the best available evidence at the time. This ensures that planned infrastructure is deliverable at an appropriate time to meet the needs from development.

3.2 Planning Practice Guidance

To provide further information and support policies set out in the NPPF, the Planning Practice Guidance was published by the Government in March 2014 and is an iterative resource that is updated when needed. The Guidance covers numerous topics including infrastructure.

The Planning Practice Guidance states that a Local Plan should identify what infrastructure is required, how it is going to be funded, who is going to provide it and how it relates to the anticipated rate of development.

In relation to CIL, the Planning Practice Guidance indicates that charging authorities (such as Tandridge District Council) need to identify the total cost of infrastructure they wish to fund wholly or partly through the levy.

3.3 Our Local Plan 2033

Our Local Plan 2033 sets out a vision for the district and how this will be achieved. It directs the distribution of development within the district and provides a framework for other development plan documents such as Area Action Plans, Regeneration Masterplans and Neighbourhood Plans.

The Strategic Objectives of the Local Plan are:

Objective Reference	Spatial Objective	Theme
SO1	To strengthen and diversify the economy by providing sufficient, sustainably located employment land to meet local needs and to provide opportunities for residents to work locally. Existing businesses will be supported by enabling intensification and, where appropriate, the expansion of current employment sites will be encouraged. Rural businesses and the rural economy, including farming and agriculture will continue to be seen as an asset to the District, where appropriate.	Economy
SO2	Support the development of tourism by recognising local tourism assets and supporting those that enhance the local economy without significant harm to the quality of life of local residents.	Economy
SO3	Support opportunities which engender a skilled workforce, particularly at the intermediate and higher skilled levels which will also contribute to a reduction in the amount of out-commuting for employment.	Economy
SO4	Provide a supply of homes, both affordable and market, which respond to the needs of our community and supports a mixed community. New homes will diversify the existing housing stock in the district, in terms of size and type (e.g. allowing for a range of family housing, entry level homes and opportunities to downsize) and in response to identified needs.	Housing
SO5	Recognise and respond to the accommodation needs of the traveller community.	Housing
SO6	Support our town centres to be vibrant and viable through encouraging wider diverse retail and leisure opportunities as well as regeneration.	Town Centres & Retail
SO7	Encourage healthier and stronger communities across the District, by ensuring sufficient access to quality parks, open spaces, sports and community facilities and to protect the spaces and facilities that serve the needs of residents.	Health & Wellbeing
SO8	Ensure place-making by promoting development that is accessible, safe and that encourages wellbeing.	Design
SO9	Continue to support high quality design that respects and positively adds to the existing character of settlements and consider higher densities where appropriate.	Design
SO10	Mitigating and adapting to the impacts of climate change where possible and promoting development which is environmentally resilient.	Design

SO11	To ensure that previously developed land is fully utilised, with a focus on previously developed land and optimised densities as far as is practicably possible.	Best Use of Land
SO12	Maintain a Green Belt within Tandridge that serves the policy purposes set out in the National Planning Policy Framework and ensure the Green Belt endures beyond the plan period.	Green Belt
SO13	Maintain, enhance and respect the District’s green infrastructure including landscape character, open spaces, habitats and biodiversity networks.	Landscape & Natural Environment
SO14	Preserve, enhance and protect our historic environment and heritage assets.	Historic Environment
SO15	Ensure that development avoids and mitigates flood risk in the District, incorporating Sustainable Drainage Systems and contribute to wider flood risk management objectives, where possible.	Flooding
SO16	Improve existing transport networks whilst supporting and encouraging the use of sustainable and integrated modes of transport.	Infrastructure
SO17	Work with partners and service providers to ensure the delivery of improved infrastructure, services and facilities to meet the needs of the District across the plan period and to ensure that the provision of new or enhanced infrastructure matches need as it arises.	Infrastructure

To help address these objectives the Local Plan requires contributions towards infrastructure from new development. Our Local Plan: 2033 contains site specific policies which identify infrastructure required to be provided as part of the allocation as either an on-site or off-site contribution where this is appropriate. In addition there are a number of overarching infrastructure policies and two policies relating to infrastructure contributions which are set out below:

TLP04: Infrastructure Delivery and Financial Contributions

New development will be supported by the timely delivery of infrastructure, services and facilities necessary to provide balanced, more self-sufficient communities.

Progress on the delivery of infrastructure will be monitored and the Infrastructure Delivery Plan (IDP) will be updated to reflect changes in infrastructure need, for example to highlight where projects have been delivered and to identify alterations to funding levels and sources. The IDP will be a 'living document' and sit alongside our development plan which will include the subsequent South Godstone Garden Community Area Action Plan (AAP). Applications must demonstrate mechanisms to provide infrastructure set out in the most up-to-date iteration of the IDP. As development proposals progress through the development management process, the need for further mitigation measures could emerge, in addition to those required in the Housing Allocations policies. The policy requirements for specific contributions do not preclude the need to fund further mitigation measures that may be identified at a later stage as being required to make the development acceptable in planning terms.

Community Infrastructure Levy will be utilised to fund strategic infrastructure, as appropriate and on reflection of the Council's current and future strategic funding priorities.

Planning permission will be granted for development subject to infrastructure constraints being resolved in agreement with the Local Planning Authority. Infrastructure should be provided prior to commencement, where appropriate. Every effort should be made to phase development alongside the delivery of infrastructure so as to reduce demands on all associated infrastructure as far as is practicably possible.

For non-allocated sites the timing of infrastructure provision and/or contributions will be determined on a case by case basis.

Applicants will either make on-site provision, or will contribute towards the provision of local and strategic infrastructure required by development, either alone or cumulatively with other developments. These contributions will be required in accordance with the IDP, unless an alternative arrangement is agreed with the Local Planning Authority.

The Council would expect to be proactively involved in the early discussions between applicants and infrastructure providers, where relevant, to limit any potential delay to the overall application and delivery process. Applicants are advised to share any viability work they have had carried out early on in the application process, including at pre-application stage where available.

The Council will take a proactive role to delivery policy objectives, including through the use of statutory powers if needed and where possible.

TLP05: Development Viability

The Council will expect all policy requirements, including affordable housing provision and infrastructure delivery, to be fulfilled as is relevant to each development in accordance with the policies of Our Local Plan, the Infrastructure Delivery Plan and government guidance. In addition, any application subject to TLP12 and all major applications and those where the applicant consider policy requirements cannot be met must be accompanied by development viability assessments during pre-application and/or at the point of submitting their application.

The Council will work actively with applicants to establish whether any additional stream of funding may be available and work to assist in facilitating and securing delivery, where possible.

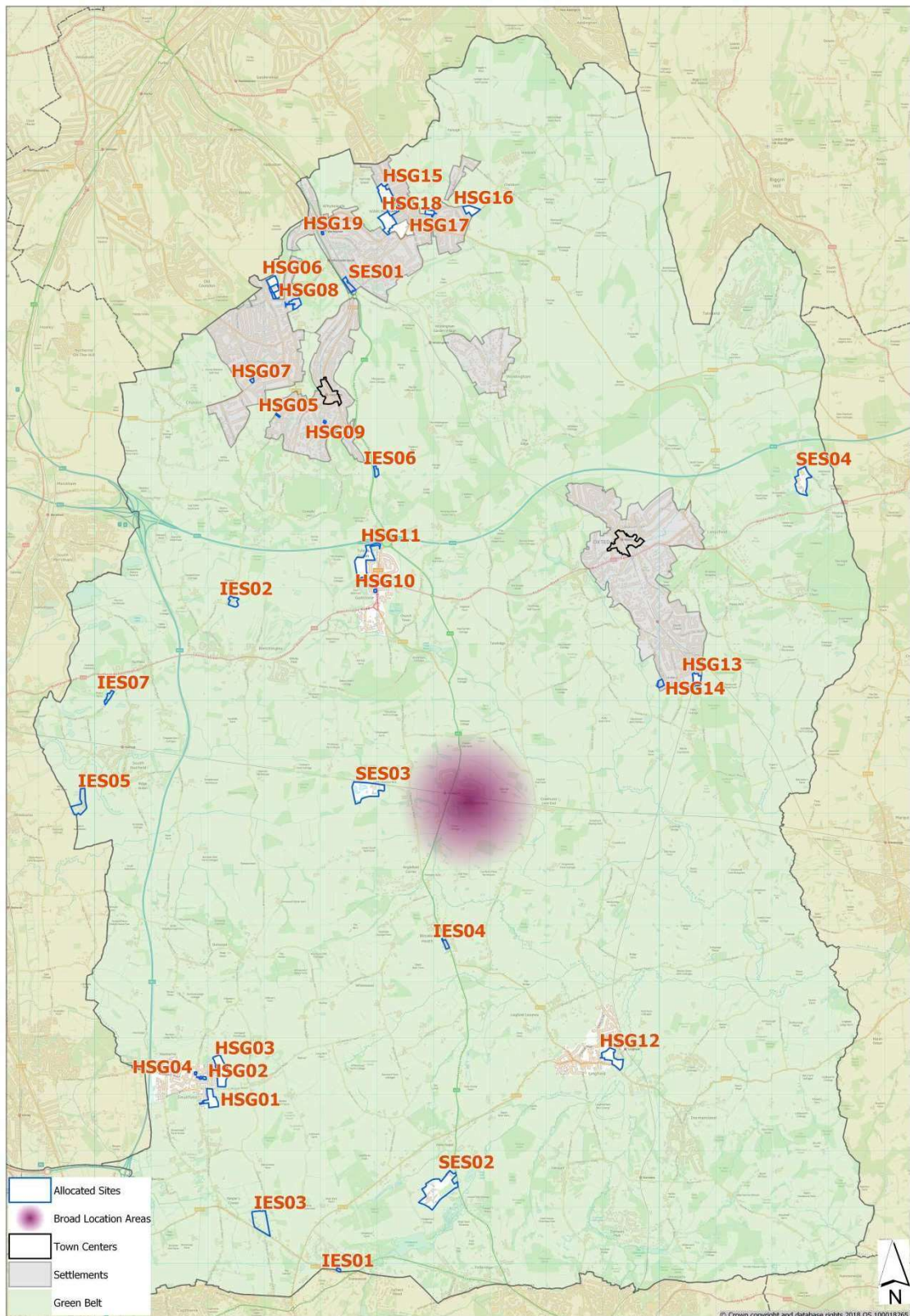


Figure 2: Housing and Employment Allocations set out in Our Local Plan: 2033

Figure 2 provides a geographical context of the distribution of housing and employment site allocations that are contained within Our Local Plan and identifies the broad location of a new

Garden Community at South Godstone. Each of these allocations will need to be supported by the infrastructure requirements set out in this IDP and in the policy wording contained in Our Local Plan in order to secure planning permission.

3.4 Area Action Plans

An Area Action Plan (AAP) is a guiding document which provides detailed policy and guidance in relation to a specific area of land. Our Local Plan: 2033 sets out that preparation of an AAP will be required specifically for the Garden Village Community at South Godstone. This IDP will assist in the formulation of the AAP but will in itself also be updated to reflect policy and development requirements of the AAP in due course.

3.5 Neighbourhood Plans

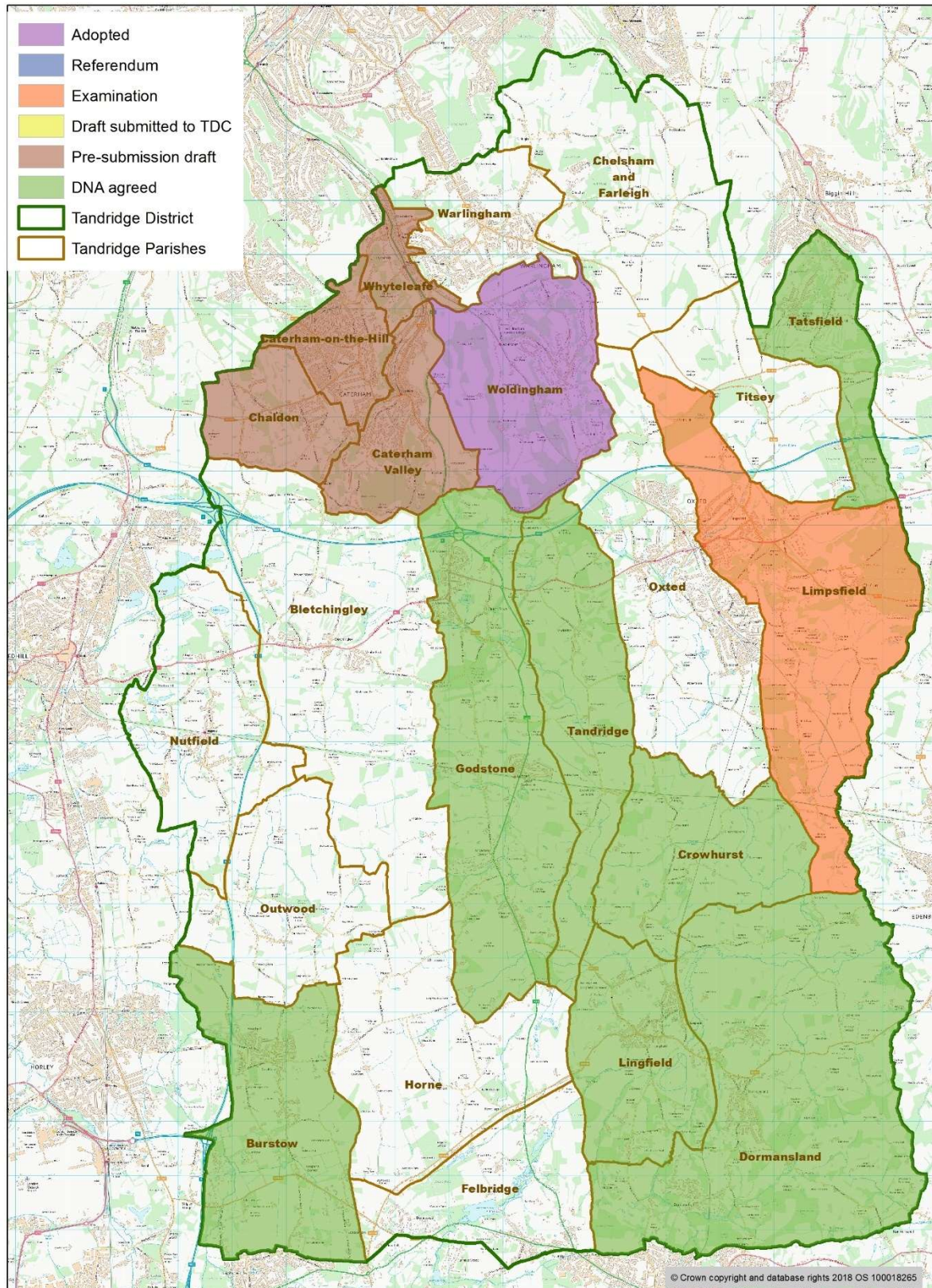
Neighbourhood Plans are ordinarily led by a Parish Council but may also be led by a Community Forum where no Parish Council exists, or where multiple parishes prepare a joint Plan. All of Tandridge District is divided in parishes, and many of these Councils are at different stages of Plan preparation, but there is also one forum, where four parishes have joined together to be known as the CR3 Forum, in order to prepare a single Neighbourhood Plan.

The ability for parish councils to produce neighbourhood plans was introduced in the Localism Act 2011. Neighbourhood plans should support the strategic development needs set out in the Local Plan and must address the development and use of land.

Neighbourhood plans include policies for the local area which would be used in determining planning applications. This means that neighbourhood plans produced by parish councils in Tandridge may include policies relating to infrastructure provision or that will have a direct impact on the existing infrastructure. At the time of writing this IDP one Neighbourhood Plan has been 'made' with a further nine in progress (see Figure 3). Where available, information on infrastructure provision contained within the neighbourhood plans that have been formally 'made' has been included in the infrastructure schedules of the IDP. As further work progresses on the various Neighbourhood Plans this IDP will be updated where it is appropriate to do so.

Where a neighbourhood plan has been 'made', the relevant parish council will receive 25% of the CIL receipts arising from development that takes place in their area, with no cap. In areas where there is not a 'made' neighbourhood plan, the relevant parish council will receive 15% of the CIL receipts where development has taken place, and this is capped at £100 per existing dwelling.

Furthermore informal consultation has been undertaken with Parish Councils inviting their input in identifying infrastructure needs for their parish, even where no Neighbourhood Plans are being progressed, and the conclusions of this are included within the IDP schedules.



Tandridge District Council Neighbourhood Plan Status

1:60,000

Figure 3: Progress of Neighbourhood Plans in Tandridge

4 Infrastructure Funding Mechanisms

Infrastructure can be funded through a variety of different mechanisms. As far as possible, the IDP identifies the committed and potential funding sources for each of the infrastructure schemes. There are a number of funding mechanisms available in order to fund infrastructure, some of which are explained below.

4.1 Community Infrastructure Levy

Planning Practice Guidance defines the Community Infrastructure Levy (CIL) as a *‘tool for local authorities in England and Wales to help deliver infrastructure to support the development of their area’*. The basis for CIL was introduced in the Planning Act 2008 and it came into force on the 6th April 2010 through the Community Infrastructure Levy Regulations 2010.

Once the CIL rates have been set through a charging schedule, all relevant development will have to pay the levy, which is expressed as pounds (£) per square metre (m²). In setting the levy, the charging authority (that is, Tandridge District Council) should strike an appropriate balance between the desirability of funding infrastructure and the potential impact upon the economic viability of development across the area. The first instalment of the levy is due on the date the chargeable development commences.

Regulation 123 of the Community Infrastructure Levy Regulations 2010 (as amended) provides for charging authorities to set out a list of those projects or types of infrastructure that it intends to fund, or may fund, through the levy. Where the Regulation 123 list includes a generic type of infrastructure (for example, transport or education), Section 106 contributions (see 4.2 below) should not be sought on any specific projects in that category. This means it should be clear what developers will need to pay for through which route and avoids ‘double-dipping’ when developers could pay twice for the same infrastructure. To ensure clear guidance on this the Council has prepared a planning obligations and CIL guidance note.

Tandridge District Council currently has a CIL Charging Schedule in place which requires £120 per square metre of residential development and £100 per square metre for convenience retail³. This IDP or any subsequent updates will form part of the evidence base to justify an update to the CIL Charging Schedule in due course.

Whilst the infrastructure schedules consider if an infrastructure scheme will support the Local Plan, a neighbourhood plan or if it is a proposed community improvement, the IDP does not intend to set the governance arrangements for CIL. This is a matter for the Tandridge CIL Committee.

4.2 Section 106 Planning Agreements

A planning obligation made under Section 106 of the Town and Country Planning Act 1990 is a developer contribution towards infrastructure to mitigate the impacts of a development proposal. Any contribution should meet the statutory tests set out in the Community

³ This increases against indexation and currently stands at £146 per sqm for residential and £122 per sqm for retail .

Infrastructure Levy Regulations 2010 (as amended) and the policy tests set out in paragraph 204 of the NPPF. Regulation 122(2) of the CIL Regulations 2010 (as amended) provides: 122(2) A planning obligation may only constitute a reason for granting planning permission for the development if the obligation is –

- (a) necessary to make the development acceptable in planning terms;
- (b) directly related to the development; and
- (c) fairly and reasonably related in scale and kind to the development.

From April 2015, restrictions on pooling contributions apply so that if five or more S106 planning obligations have been entered into since the 6th April 2010 for a specific project or type of infrastructure, no more contributions may be sought. There are still discussions about whether this pooling restriction is to be removed.

4.3 Section 278 Highway Agreements

A Section 278 highway agreement made under Section 278 of the Highways Act 1980 (as amended) is an agreement between a highway authority (in this case, Surrey County Council) and a person who agrees to pay all or part of the cost of highways works. Section 278 agreements cannot be required for works that are intended to be funded through CIL and so planning obligations and conditions should not be used to require a developer to enter into a Section 278 agreement to provide infrastructure items that appear on the CIL charging authority's Regulation 123 list.

4.4 Planning Conditions

Planning conditions attached to a planning permission enable development proposals to proceed where it would otherwise have been necessary to refuse planning permission, by mitigating the adverse effects of development. This may include the provision of infrastructure. Planning conditions should meet the policy tests set out in the NPPF in that they are necessary, relevant to planning and to development to be permitted, enforceable, precise and reasonable in all other respects.

4.5 Other Funding Sources

There are other sources of funding that could be used to provide infrastructure. These include, but are not limited to:

Other funding sources for infrastructure	
Grants	New Homes Bonus
Growing Places Fund	Private Sector Investment
Housing Infrastructure Fund	
Local Enterprise Partnership*	Tax Incremental Funding
Lottery Funding	Investment Programmes

*At the time of writing the Local Enterprise Partnership has indicated that there are currently no funding sources available, however, this may change in the future depending on priorities of Central Government.

If it is known that other funding sources will fund infrastructure schemes, this information will be added to the infrastructure schedules where appropriate. Tandridge District Council will actively explore all funding opportunities that become available in order to secure infrastructure for the benefit of our district.

5 Cross-boundary Infrastructure Needs

As part of the Duty to Cooperate process, Tandridge District Council has engaged with a number of authorities including Surrey County Council and neighbouring authorities on cross-boundary infrastructure needs. The District Council already works in partnership with these authorities on areas of common interest and cross-boundary issues. This is in order to ensure that any issues are identified and effectively dealt with and enables opportunities to work together where it is beneficial to do so. This includes work on flood risk, transport, green infrastructure, mitigation strategies in relation to the Ashdown Forest and the Reigate to Mole Gap Escarpment, sub-regional economic priorities and Gatwick Airport.

Neighbouring Authorities	
Surrey County Council	Mid Sussex District Council
West Sussex County Council	London Borough of Croydon
East Sussex County Council	London Borough of Bromley
Kent County Council	Sevenoaks District Council
Reigate & Banstead Borough Council	Wealden District Council
Crawley Borough Council	

Details of cross-boundary infrastructure needs, where these are known, are identified in Appendix A. Further work will need to be undertaken with these partners to draw up the detail on these infrastructure schemes and how they will be implemented.

6 Summary of Key Infrastructure Requirements

It is apparent from both conversations with statutory stakeholders and through public consultation, that there is a wide range of infrastructure required across the District, however, not all of these are required in order to support the development identified in the Tandridge Local Plan. There are certain infrastructure elements that will be required in order to specifically support a new Garden Community at South Godstone, and more detailed work on these elements will be taken forward as part of the Area Action Plan process.

In Tandridge, decisions relating to the use of CIL funding are made by the CIL Committee which currently meets on a quarterly basis. This Committee accepts bids from stakeholders and service providers for CIL funding from the Strategic CIL fund, as well as monitoring the delivery of infrastructure. This Strategic CIL fund is limited to only addressing strategic infrastructure needs and as the fund is small in comparison to some other CIL charging authorities, priorities have to be made as to how the funds are spent. The non-strategic CIL Fund, is the part that is portioned out to the Parish Councils. The committee has elected to prioritise the following infrastructure themes, at the current time, in its allocation of funds:

- Increasing capacity in education provision
- Increasing capacity in health provision
- Flood alleviation
- Regeneration schemes, including the Caterham Masterplan and RegenOxted
- Highways Improvements

The CIL Committee have also started to consider what strategic projects CIL should fund to provide clarity for all providers, and this is reflected in the IDP. The bidding form that has been agreed by the Committee sets strict criteria in terms of what will be accepted and assessed by the Council for CIL to be used in assisting the delivery of infrastructure. The IDP provides clarity on where funding will come from in the column 'funding arrangement'. Those elements that are not identified to be funded by CIL in this IDP will need to be funded via alternative funding mechanisms.

Infrastructure items other than what the service providers required have been identified by Parish Councils and Ward Members as representatives of the community in their part of the District. These items are deemed to be more aspirational, and whilst listed on the IDP, not all will be guaranteed to be funded. Parish Councils, should they wish to, may use their element of CIL funding (15% in non- Neighbourhood Plan areas (capped at £100 per existing dwelling) and 25% in areas with a 'made' Neighbourhood Plan) in order to fund these elements. In addition the Local Committee for Tandridge may also elect to contribute towards these items.

Service providers may fund some of these improvements themselves, for example open space improvements may be funded by Tandridge Council where they have been identified by prioritisation set out in the Councils' emerging Open Space Strategy.

7 Infrastructure Costs

The Strategic Infrastructure Plan in Appendix A lists the required infrastructure necessary to support development in the District and identifies the costs where these are known using the most appropriate available evidence. These infrastructure requirements were identified through stakeholder engagement with strategic partners including the County Council, water providers etc etc. Where no information has been provided by a service provider at the current time, or where there were no schemes to benchmark costs against, the IDP reflects an unknown costing. This is a live document; therefore once information becomes available this IDP will be updated with the latest information gathered. This also accounts for where changes could be made to the IDP when updated evidence, such as detailed designs, and feasibility work are available.

Taking into account known and expected funding sources to meet the infrastructure costs, a funding gap is left. The costs of providing infrastructure can be met through a variety of sources including CIL and the uplift in land values, S106, S278 and other Government Agency grants.

It should further be noted that estimated costing figures have been rounded up or down where appropriate in order to simplify calculations.

Standard build costs, such as those that would ordinarily be associated with connection fees, for example connection to the utility network have not been included in this Infrastructure Delivery Plan. These are considered to be normal abnormalities and are not unique to this district. Where there are known abnormalities, such as a requirement for a strategic trunk main to serve a new Garden Community, have these been included.

Costs for Electric Vehicle Charging points have not been included within the Infrastructure Delivery Plan. This is because current adopted Parking Standards require a certain level of provision for charging points. Furthermore, it is known that Electric Vehicle Charging Points can be delivered for approximately £500 - £750 per dwelling at today's prices and these are anticipated to be captured as part of standard build costs.

Abbreviations and Acronyms

AMR	Annual Monitoring Report
CIL	Community Infrastructure Levy
GLA	Greater London Authority
HRA	Habitats Regulations Assessment
IDP	Infrastructure Delivery Plan
LAP	Local Area for Play
LBC	London Borough of Croydon
LEAP	Local Equipped Area for Play
MUGA	Multi Use Games Area
NPPF	National Planning Policy Framework
NR	Network Rail
PROW	Public Rights of Way
RBBC	Reigate and Banstead Borough Council
SAMM	Strategic Access Management and Monitoring
SANG	Suitable Alternative Natural Greenspace
SCC	Surrey County Council
SDC	Sevenoaks District Council
SPA	Special Protection Area
SuD	Sustainable Urban Drainage System
TDC	Tandridge District Council

8 Appendix A - Strategic Infrastructure Plan

Appendix A identifies the Strategic Infrastructure Plan for Tandridge District. The tables are sorted by cross-boundary, district-wide, garden community and parish requirements. Each table lists the infrastructure requirements grouped into various categories, as outlined at Figure 1. Where specific infrastructure schemes are known, these are identified and are costed so far as has been possible. Each scheme has an associated timeframe when the infrastructure is required, however, there will be some infrastructure provision that are “desirable” but are not considered essential to the delivery of development:

- required within 1 – 5 years;
- required within 6 – 10 years;
- required within 11+ years.
- Desirable

The cost figures provided in these schedules are estimates based on the best available information at the time. Where new evidence arises and new costs become known, these figures will be updated to reflect the latest available position. It should further be noted that these cost estimates have been rounded in the interests of simplicity.

Where an infrastructure category may be blank, a specific requirement has not been identified at this point in time; however as previously outlined, the live nature of this document means that requirements can be added, removed, re-prioritised and re-costed, where appropriate.

Cross-boundary Requirements							
Infrastructure Category	Infrastructure Scheme	P Timeframe	Infrastructure Support	Total Estimated Infrastructure Cost (Higher)	Funding Arrangement	Sites to Contribute	Delivery Partner
	Improvement to bus network -A22/East Grinstead	6 – 10/11+	Local Plan	£3,000,000	S106	Garden Community/East Grinstead Developments TBC	Bus Operators/Surrey County Council
	Felbridge Junction Improvements A22/A264 (See Felbridge)	1 – 5/ 6 - 10	Local Plan	£10,000,000	S106/S278/HIF	SES02/Garden Community / Sites in East Grinstead	Surrey County Council/West Sussex County Council
	Reinstatement of Uckfield to Lewes Railway Line	Desirable	Surrey Local Transport Plan	Unknown	Network Rail/LEP		Network Rail
	Improvements to Brighton Mainline	6 - 10	Surrey Local Transport Plan/Network Rail Upgrade Plan	Unknown	Network Rail/LEP		Network Rail
	Redhill-Tonbridge Line improvements to include reintroduction of Kent to Gatwick service	Desirable	Surrey Local Transport Plan	Unknown	Network Rail/Train Operating Company		Network Rail/Train Operating Company
	Copthorne (West Sussex) Junction Improvements	11+	Local Plan	£2,000,000	S106	IES01, IES03	West Sussex County Council

Tandridge District Infrastructure Delivery Plan – January 2019

Education							
Health							
Recreation, Sport and Community Facilities							
	Cemetery Expansion	1 - 5	Local Plan	£5,000,000	Local Authorities / Private Investor		Public Sector/Private Sector
Utilities / Broadband							
Flood Defence							
	Caterham Bourne Flood Alleviation Scheme	All	Local Plan/Neighbourhood Plan/Caterham Masterplan	£2,500,000,000	CIL/EA Grant in Aid/London Borough of Croydon		Environment Agency/Surrey County Council/London Borough of Croydon
	Caterham Hill Flood Alleviation Scheme	All	Local Plan/Neighbourhood Plan/Caterham Masterplan	£10,000,000	CIL/EA Grant in Aid/London Borough of Croydon/Thames Water/Surrey County Council		Environment Agency/Surrey County Council/Tandridge District Council/Thames Water/ London Borough of Croydon
Green Infrastructure							

Tandridge District Infrastructure Delivery Plan – January 2019

District Wide Requirements							
Infrastructure Category	Infrastructure Scheme	Timeframe	Infrastructure Support	Total Estimated Infrastructure Cost (Higher)	Funding Arrangements	Site to Contribute	Delivery Partner
Transport							
	Cycle Improvement/ Cycle Lane infilling/ Continuation	Desirable	Surrey Local Transport Plan	TBC	TBC		Surrey County Council
	Whyteleafe to Godstone Cycle Route Improvements	Desirable	Surrey Local Transport Plan	£100,000	TBC		Surrey County Council
	National Cycle Network - Route N21 - Resurfacing/ Improvement works	Desirable	Surrey Local Transport Plan	£200,000	TBC		Surrey County Council
	A25 – Off Road Cycle Route	6 - 10	Surrey Local Transport Plan	£250,000	/ S106 / S278	HSG11	Surrey County Council
	A22 – Off Road Cycle Route	6 – 10/11+	Surrey Local Transport Plan / Tandridge Local Plan	TBC	/ S106 / S278	HSG11/ IES04/ Garden Community	Surrey County Council
	Improvement to bus network	All	Surrey Local Transport	£1,000,000	S106		Surrey County Council/Bus Operators

Tandridge District Infrastructure Delivery Plan – January 2019

	<p>which will be dependent on a route study. Current proposals include Real Time Passenger Information, Bus Shelters, Intelligent Bus Priority (within urban areas) and raised kerbs and hardstanding</p>		Plan / Surrey Infrastructure Study				
	Covered Cycle stands at 11 railway stations	Desirable	Surrey Local Transport Plan/ TOC Station Travel Plans	£150,000	CIL/ S106/Network Rail/Highways England		Tandridge District Council/Surrey County Council/ Train Operating Companies
	Reinstatement of the Crowhurst Chord – enabling train services to London/Tonbridge via Oxted	Desirable	Surrey Local Transport Plan	TBC	Network Rail/ LEP		Network Rail
	Junction 6 improvements	All	Tandridge Local Plan	£20,000,000	S106/ HIF	HSG11/ IES06/ Garden Community	Surrey County Council/Highways England
	A22/A25 Junction improvement	6 – 10/11+	Tandridge Local Plan	£5,000,000	S106/ HIF /CIL	Garden Community	Surrey County Council
	A22/Bone Mill Lane Improvement	6 – 10/11+	Tandridge Local Plan	£2,000,000	S106/ HIF /CIL	Garden Community	Surrey County Council

Tandridge District Infrastructure Delivery Plan – January 2019

	A22/Miles Lane Improvement	6 – 10/11+	Tandridge Local Plan	£2,000,000	S106/ HIF /CIL	Garden Community	Surrey County Council
	A22/ Tilburstow Hill Road Improvement	6 – 10/11+	Tandridge Local Plan	£5,000,000	S106/ HIF/CIL	SES03	Surrey County Council
	A22/Ray Lane Improvement	6 – 10/11+	Tandridge Local Plan	£2,000,000	S106/ HIF/CIL	Garden Community	Surrey County Council
	A22/Newchapel Road Improvement	6 – 10/11+	Tandridge Local Plan	£5,000,000	S106/ HIF /CIL	Garden Community	Surrey County Council
Education							
	Primary Schools - new 2 FE primary school <u>or</u> 2 FE primary school expansion of existing school <u>or</u> 2 x 1 Fe primary school expansion at existing schools (within the north of the district) (An additional 1FE is to be provided at Warlingham Village Primary – see Warlingham Parish)	All	Tandridge Local Plan	£7,000,000 per expansion)	CIL/Surrey County Council/S106		Surrey County Council
	Secondary School – 2FE expansion	All	Tandridge Local Plan	£8,000,000	CIL/s106		Surrey County Council

Tandridge District Infrastructure Delivery Plan – January 2019

	of existing secondary (within the north of the district)						
	Early Years Provision (2 x 26FTE nursery within the north of the district)	All	Tandridge Local Plan	£600,000	CIL/s106		Surrey County Council
Health							
	Acute HealthCare – Benchmark needs to support growth	All	Surrey Infrastructure Study/ Local Plan	£14,080,000	tbc		CCG/NHS England
Recreation, Sport and Community Facilities							
	Replacement Programme for Fire Stations (County Wide)	Desirable	Surrey Infrastructure Study	£35,000,000 (County Wide)	tbc		Surrey County Council
Utilities/Broadband							
	Household Waste Recycling Centre	1 – 5/6 - 10	Surrey Infrastructure Study	£1,800,000	tbc		Surrey County Council
	Broadband-Benchmark based Theoretical Need to Support Growth		Surrey Infrastructure Study	£2,000,000	tbc/ DCMS		Surrey County Council
Flood Defence							

Tandridge District Infrastructure Delivery Plan – January 2019

Green Infrastructure							
	Local Nature Reserves Survey – pSNCI's Review Study		Open Space Assessment	£165,000	TDC		Tandridge District Council/Surrey Wildlife Trust

Garden Community Requirements							
Infrastructure Category	Infrastructure Scheme	Priority	Infrastructure Support	Total Estimated Infrastructure Cost (Higher)	Funding Arrangement	Site to Contribute	Delivery Partner
Transport							
	Godstone Station Improvements to include Park and Ride facility/Transport interchange/mobility impaired access to both platforms, ticket hall and water closets in addition to enhanced rail services serving the station	6-10/11+	Local Plan/AAP	£15,000,000	S106/LEP/Private Sector/Public Sector investment	Garden Community	Network Rail/Train Operating Company
	Numerous Junction Improvements (See District Wide Requirements)	All	Local Plan	See District Wide Requirements	S106/LEP/Private Sector/Public Sector investment	Garden Community	Surrey County Council
	Potential Spine Road	6 – 10/11+	Local Plan/AAP	TBC	S106/LEP/Private Sector/Public Sector investment	Garden Community	Surrey County Council
Education							
	Land and 6 FE Secondary School with sixth form provision that is designed to allow for seamless expansion in the future should additional requirement arise	6 – 10/11+	Local Plan/AAP	£30,000,000	S106	Garden Community	Surrey County Council
	Primary Schools – Land and new 2FE Primary School expandable to	6 – 10/11+	Local Plan/AAP	£7,000,000	S106	Garden Community	Surrey County Council

Tandridge District Infrastructure Delivery Plan – January 2019

	3FE to include dedicated nursery and Special Support Centre for children with Special Educational Needs						
	Primary Schools – Land and new 2FE Primary School expandable to 3FE to include dedicated nursery and Special Support Centre for children with Special Educational Needs	6 – 10/11+	Local Plan/AAP	£7,000,000	S106	Garden Community	Surrey County Council
	Primary Schools – additional 1FE primary school <u>or</u> equivalent expansion of existing primary school	6-10/11+	Local Plan/AAP	£3,500,000	S106	Garden Community	Surrey County Council
	Early Years Provision (1X Day Nursery)	6 – 10/11+	Local Plan/AAP	£800,000	S106	Garden Community	Surrey County Council
Health							
	GP Health and Social Care Hub	6 - 10	Local Plan/AAP	£10,000,000	S106	HSG11/Garden Community	CCG/NHS England
Recreation, Sport and Community Facilities							
	2*3G pitches	6 – 10/11+	Local Plan/AAP	£2,000,000	S106	Garden Community	Public Sector Investment/Private Sector Investment
	Provision of at least 3 public houses	6 – 10/11+	AAP	TBC	Private Sector Investment	Garden Community	Private Sector Investment

Tandridge District Infrastructure Delivery Plan – January 2019

	At least 5 Community buildings, including Community Centre	6 – 10/11+	AAP	TBC	S106 Private and Public Investment	Garden Community	Private Sector/Public Sector
	Religious building	6 – 10/11+	AAP	TBC	S106 /Private Sector/Public Sector Investment	Garden Community	Private Sector
Utilities/Broadband							
	Gas supply infrastructure (Provision of trunk main as opposed to standard connection)	6 – 10/11+	Local Plan/AAP	£3,480,000	Connection Fees		Utility Provider
	Potential connection to Lambs Business Park to provide renewable energy	6 – 10/11+	Local Plan/AAP	£2,000,000	Connection Fees	Garden Community	Utility Provider
	Foul Water trunk connection/upgrade and Upgrade to WwTW	6 – 10/11+	AAP	TBC	Connection Fees	Garden Community	Utility Provider
Flood Defence							
	Flood Risk Assessment (<i>and alleviation where required</i>)*	6-10	Local Plan/AAP	TBC	FRA as standard application requirement, flood alleviation where required via S106	Garden Community	Developer with Surrey County Council as Lead Local Flood Authority
Green Infrastructure							
	100 Hectares of Strategic Scale Green Infrastructure on a single site comprising natural and semi-natural greenspace in accordance with Natural England ANGST standards	6 – 10/11+	Local Plan/AAP/Open Space Assessment/Habitats Regulations Assessment	£28,600,000	S106 /Private/Public Sector investment	Garden Community	Developer/Public Sector Investment/Private Sector (Carbon Offsetting Scheme)/Natural England

Tandridge District Infrastructure Delivery Plan – January 2019

	Improvements along existing footpaths, Public Rights of Way and Watercourses by the creation of high quality green corridors throughout the broad location, with the aim to improve water quality along Middle Eden/Gibbs Brook/Ray Brook from moderate to “at least” good water quality	6 – 10/11+	Local Plan/AAP	£30,000,000	S106	Garden Community	Developer/Public Sector/Environment Agency/Surrey County Council
--	--	------------	----------------	-------------	------	------------------	--

*No assumptions have been in relation to alleviation requirements at this time owing to the Masterplanning process having to take place as part of an AAP

Bletchingley Requirements							
Infrastructure Category	Infrastructure Scheme	Priority	Infrastructure Support	Total Estimated Infrastructure Cost (Higher)	Funding Arrangement	Site to contribute	Delivery Partner
Transport							
	Grange Meadow - Improvements to access road and car park	Desirable	Parish Council aspirations	£30,000	TBC		Tandridge District Council/Parish Council
	Outwood Lane/A25 Signalisation	Desirable	Local Plan	£150,000	S106 / S278	IES02	Surrey County Council
Education							
Health							
Recreation, Sport and Community Facilities							
	Stychens Lane Playground improvements/up grade	1 – 5/6 - 10	Parish Council aspirations	£50,000	Parish Council		Parish Council
Utilities/Broadband							

Tandridge District Infrastructure Delivery Plan – January 2019

Flood Defence							
	Outwood Lane Drainage (see Outwood)	All	Water Resources Management Plan	TBC	SES Water		SES Water
	Grange Meadow pond creation	Desirable	Parish Council Aspirations	£20,000	Parish Council		Parish Council
Green Infrastructure							

Burstow Requirements							
	Infrastructure Scheme	Priority	Infrastructure Support	Total Estimated Infrastructure Cost (Higher)	Funding Arrangement	Site to contribute	Delivery Partner
Transport							
	Redehall Road - removal of existing speed cushions and provision of alternative traffic calming measures	Desirable	Local Committee Aspiration	£50,000	S278/Parish Council		Surrey County Council
	Road Safety Scheme for Burstow Primary School, Wheelers Lane	1 – 5/6 - 10	Local Committee/ Surrey County Council Aspiration	£50,000	Parish Council/CIL		Surrey County Council

Tandridge District Infrastructure Delivery Plan – January 2019

	Additional 58 car parking spaces adjacent to the centre of Smallfield	1 - 5	Parish Council Aspiration	TBC	Parish Council		Parish Council
	Pedestrian Crossing on Redehall Road	1 – 5 / 6 -10	Local Plan	£150,000	S106 / S278 / CIL	HSG02/ HSG04	Surrey County Council
	Junction Improvements at Plough Road/Redehall Road/Chapel Road/Wheelers Lane	1 – 5/ 6 – 10	Local Plan	£65,000	S106 / S278/ CIL	HSG01/ HSG03	Surrey County Council
Education							
	Expansion / reprovision of Burstow Primary School	Desirable	Local Plan	£3,500,000	CIL		Surrey County Council
Health							

Tandridge District Infrastructure Delivery Plan – January 2019

Recreation, Sport and Community Facilities							
	Community Café/Social hub	Desirable	Parish Council Aspiration	TBC	Parish Council		Parish Council
	Expansion to existing children's playground at Plough Field Park and Recreation Ground	All	Local Plan/ Open Space Assessment	£50,000	Parish Council/TDC		Tandridge District Council
	King Georges Playing Field, Playground provision	All	Local Plan/ Open Space Assessment	£50,000	Parish Council/TDC		Tandridge District Council
	Plough Field Park - Youth Provision	1 – 5/ 6 - 10	Local Plan/ Open Space Assessment	£250,000	S106/TDC	HSG01/ HSG03	Tandridge District Council

Tandridge District Infrastructure Delivery Plan – January 2019

	King Georges Playing Field - Youth Provision	All	Local Plan/ Open Space Assessment	£250,000	Parish Council/TDC		Tandridge District Council
	St Bartholomew - extension to churchyard for burial provision	All	Local Plan/ Open Space Assessment	TBC	Diocese/ Local Authorities		Diocese
	Amenity Green Space	6 - 10	Local Plan/ Open Space Assessment	£200,000	S106 / TDC	HSG01	Tandridge District Council
Utilities/Broadband							
	Broadband provision and enhancement	Desirable	Parish Council Aspiration	TBC	Parish Council/ DCMS		Parish Council
	Electricity Supply Enhancements to secure resilience	Desirable	Parish Council Aspiration	TBC	UK Power Networks		UK Power Networks
	Improved mobile phone coverage	Desirable	Parish Council Aspiration	TBC	Mobile Network Operators		Mobile Network Operators

Tandridge District Infrastructure Delivery Plan – January 2019

Flood Defence							
	Smallfield Flood Alleviation Scheme	All	Local Plan	£10,000,000	Environment agency / CIL / SCC		Environment Agency/ Surrey County Council/ Tandridge District Council
	Smallfield Attenuation Ponds	1 – 5/ 6 - 10	Local Plan	£10,000,000	S106	HSG01/ HSG03	Private investment/Tandridge District Council/ Surrey County Council
Green Infrastructure							

Caterham on the Hill Requirements							
Infrastructure Category	Infrastructure Scheme	Priority	Infrastructure Support	Total Estimated Infrastructure Cost (Higher)	Funding Arrangement	Site to contribute	Delivery Partner
Transport							
	Cycle Path from Salmons Lane to Whyteleafe Station (Via Whyteleafe Hill)	All	Local Plan	TBC	S106/CIL	HSG06/HSG08	Surrey County Council
	De Stafford School Travel Plan	1 - 5	Surrey Infrastructure Study	£10,000	TBC		Surrey County Council
	Chaldon Road/High Street Mini Roundabout/Junction Upgrade	All	Local Plan / One Public Estate	£500,000	S106 / CIL	HSG20 (NTOPE)/ HSG07/ TLP28	Surrey County Council
	Pedestrian Crossing Burntwood Lane/Milner Close Path	1 – 5/ 6 - 10	Local Plan	£150,000	S106 / S278 / CIL	HSG06/ HSG08	Surrey County Council
	Buxton Lane - pedestrian crossing/traffic islands	1 – 5/ 6 - 10	Local Plan	£160,000	S106 / S278 / CIL	HSG06/ HSG08	Surrey County Council

Tandridge District Infrastructure Delivery Plan – January 2019

	Stanstead Road/Park Avenue - Footway Improvements	1 – 5/ 6 - 10	Local Plan	£100,000	S106/ S278/ Parish Council / CIL	HSG05	Surrey County Council
	Improve pedestrian safety on corner on High Street and Court Road	6 – 10/11+	Local Plan	£50,000	S106 / S278/ Parish Council/CIL	HSG20 (NTOPE)/ TLP28	Surrey County Council
	Pedestrian crossing at Salmons Lane/ Whyteleafe Road	1 – 5/ 6 - 10	Local Plan	£150,000	S106 / S278/ Parish Council/CIL	HSG06/ HSG08	Surrey County Council
	Traffic Calming and Public realm improvements related to the Caterham Masterplan	All	Local Plan / Caterham Masterplan	£3,000,000	CIL	TLP28	Surrey County Council
Education							
Health							
	Caterham Dene Hospital improvements	All	Local Plan/ One Public Estate	TBC	One Public Estate / Public bodies	HSG20 (NTOPE)	NHS/CCG

Tandridge District Infrastructure Delivery Plan – January 2019

Recreation, Sport and Community Facilities							
	Community Hall 7m2 floorspace	Desirable	Caterham Masterplan/One Public	£100,000	TBC		Public/Private Sector
	Multi Use Sports Hall	All	Local Plan	£1,000,000	Freedom Leisure / S106 / Lottery Funding / Sport England	HSG06 / HSG08 / HSG20 / TLP28	Public/Private Sector
	Multi Use Games Area	All	Local Plan	£120,000	Freedom Leisure / S106	HSG06 / HSG08 / HSG20 / TLP28	Tandridge District Council
	Town End Amenity Green Space – upgrade to a park and recreation ground (there is space for additional facilities eg youth provision)	All	Local Plan	£400,000	TDC / Parish Council	HSG20	Tandridge District Council
	Caterham Hill Library Refurbishment	Desirable	Surrey Infrastructure Study	TBC	TBC	HSG20	Surrey County Council
Utilities/Broadband							
Flood Defence							

Tandridge District Infrastructure Delivery Plan – January 2019

	Caterham Hill Flood Alleviation	High	Local Plan / Flood Action Initiative	£10,000,000	CIL / EA Grant in Aid Funding / HIF		Environment Agency/Surrey County Council/Tandridge District Council/Thames Water/Parish Council
Green Infrastructure							

Caterham Valley Requirements							
Infrastructure Category	Infrastructure Scheme	Priority	Infrastructure Support	Total Estimated Infrastructure Cost (Higher)	Funding Arrangement	Site to contribute	Delivery Partner
Transport							
	Caterham Footpath & Cycle Network	Desirable	Surrey Local Transport Plan	£50,000	TBC		Surrey County Council
	Station Avenue/Croydon Road/Godstone Road Improvements	All	Caterham Masterplan	£2,500,000	CIL/s106		Surrey County Council
	Demolition of garages adjacent to 313 Croydon road and provision of surface level car parking	Desirable	Ward Member Aspirations	TBC	Business Improvement District/Parish Council		Parish Council
	Pedestrian crossing near to 225 Croydon Road	Desirable	Ward Member Aspirations	£150,000	Business Improvement District/Parish Council		Surrey County Council
	Beechwood Gardens - introduction of permanent parking bays Beechwood Road to Tillingdown Park	Desirable	Ward Member Aspirations	£75,000	Parish Council / BID		Surrey County Council/Private investor

Tandridge District Infrastructure Delivery Plan – January 2019

	Beechwood Gardens - Tillingdown Hill/ Tillingdown Park pavement provision	Desirable	Ward Member Aspirations	£100,000	Parish Council		Surrey County Council
	Tillingdown Hill - introduction of permanent parking on Tillingdown Park side and improvements to Tillingdown Hill Parking to the south/brow of hill	Desirable	Ward Member Aspirations	£75,000	Parish Council / BID		Surrey County Council/Private investor
	Crescent Road - introduction of one-way system from Croydon Road to Timber Hill Road	Desirable	Ward Member Aspirations	£75,000	TBC		Surrey County Council
	Jct improvements at Godstone/Clareville Road with upgrade to signals for pedestrian crossing and introduction of yellow box	All	Caterham Masterplan/ Surrey Local Transport Plan	£250,000	s106 / S278/CIL		Surrey County Council

Tandridge District Infrastructure Delivery Plan – January 2019

	Harestone Valley Road – relocation of taxi waiting point	All	Caterham Masterplan	TBC	CIL		Surrey County Council/Taxi Operators
	Burntwood Lane/Whyteleafe Road junction improvements to improve flow. Erection of signage to distinguish between Caterham Valley and Caterham Hill	Desirable	Ward Member Aspirations	£10,000	Parish Council		Surrey County Council
	Caterham bypass signage improvements to direct Caterham on the Hill traffic via Wapses Lodge and Burntwood Lane	Desirable	Ward Member Aspirations	TBC	Parish Council/ /Local Committee		Surrey County Council
	Central bus terminus for Caterham Hill and Valley in vicinity of Godstone Road	Desirable	Ward Member Aspirations	TBC	TBC		Surrey County Council
	Wapses Lodge capacity improvements to improve traffic flow and reduce peak time queues.	All	Surrey Local Transport Plan/ Local Plan	£7,200,000	S106/ S278 / Surrey County Council	TLP28/ SES01	Surrey County Council

Tandridge District Infrastructure Delivery Plan – January 2019

Education							
Health							
Recreation, Sport and Community Facilities							
Utilities / Broadband							
Flood Defence							
	Caterham Bourne Flood Alleviation Scheme (see Cross Boundary Table)	All	Local Plan / Flood Action Initiative	£10,000,000	CIL / HIF		Environment Agency/Surrey County Council/Tandridge District Council/London Borough of Croydon
	Station Avenue – increased drainage capacity	All	Local Plan / Caterham Masterplan	TBC	CIL / S106		Surrey County Council/Tandridge District Council/Private Sector
	Croydon Road – increased drainage capacity between Station Avenue and Rose & Young	All	Local Plan / Caterham Masterplan	TBC	CIL/S106		Surrey County Council/Tandridge District Council/Private Sector

Tandridge District Infrastructure Delivery Plan – January 2019

	Church Hill – Increased drainage capacity	All	Local Plan / Caterham Masterplan	TBC	CIL/S106		Surrey County Council/Tandridge District Council/Private Sector
Green Infrastructure							
	Public realm improvements along Croydon Road including permanent planting and upgrades to street furniture	Low	Caterham Masterplan	£300,000	CIL / Business Improvement District		Surrey County Council/Tandridge District Council/Business Improvement District

Chaldon Requirements							
Infrastructure Category	Infrastructure Scheme	Priority	Infrastructure Support	Total Estimated Infrastructure Cost (Higher)	Funding Arrangement	Site to contribute	Delivery Partner
Transport							
	Traffic Management/ calming	Desirable	Ward Member Aspiration	£100,000	TBC		Surrey County Council
	Footpath near St Peter & St Paul School	Desirable	Ward Member Aspiration	£120,000	TBC		Surrey County Council
	Traffic Management/ Speed Camera Rook Lane	Desirable	Ward Member Aspiration	£30,000	TBC		Surrey County Council
Education							
Health							
Recreation, Sport and Community Facilities							
	Six Brothers Field – Provision of a children’s play area and/or a food growing area	All	Local Plan	£50,000	TDC / Parish Council		Tandridge District Council/Parish Council

Tandridge District Infrastructure Delivery Plan – January 2019

Utilities / Broadband							
Flood Defence							
Green Infrastructure							

Chelsham and Farleigh Requirements							
Infrastructure Category	Infrastructure Scheme	Priority	Infrastructure Support	Total Estimated Infrastructure Cost (Higher)	Funding Arrangement	Site to contribute	Delivery Partner
Transport							
Education							
Health							
Recreation, Sport and Community Facilities							
Utilities / Broadband							
	Openreach broadband deployment to reach Chelsham Common	Desirable	Ward Member/Parish Council Aspirations	TBC	TBC		Surrey County Council/DCMS/Network Operator
	Broadband improvements including direct connections to homes	Desirable	Ward Member/Parish Council Aspirations	TBC	TBC		Network Operator
Flood Defence							

Tandridge District Infrastructure Delivery Plan – January 2019

	Flood hotspot works at junction of Farleigh Road and Sunnybank	All	Local Committee / Surrey Infrastructure Plan	£1,000,000	CIL / Surrey County Council / Parish Council		Surrey County Council
	Flood hotspot works at junction of Harrow Road and Chelsham Road	All	Local Committee / Surrey Infrastructure Plan	£1,000,000	CIL / Surrey County Council / Parish Council		Surrey County Council
	Flood hotspot works Church Lane - in dip before St Leonards Church	All	Local Committee / Surrey Infrastructure Plan	£1,000,000	CIL / Surrey County Council / Parish Council		Surrey County Council
Green Infrastructure							

Crowhurst Requirements							
Infrastructure Category	Infrastructure Scheme	Priority	Infrastructure Support	Total Estimated Infrastructure Cost (Higher)	Funding Arrangement	Site to contribute	Delivery Partner
Transport							
Education							
Health							
Recreation, Sport and Community Facilities							
	Crowhurst Lane Playing Field upgrade to provide childrens play space, youth provision, natural play area and food growing area	All	Local Plan	£500,000	TDC/Parish Council		Tandridge District Council/Parish Council
Utilities / Broadband							
Flood Defence							
Green Infrastructure							

Dormansland Requirements							
Infrastructure Category	Infrastructure Scheme	Priority	Infrastructure Support	Total Estimated Infrastructure Cost (Higher)	Funding Arrangement	Site to contribute	Delivery Partner
Transport							
	Station Road/Mutton Hill/Wilderwick Road Roundabout provision	All	Parish Council Aspirations/ Surrey Transport Local Plan	£250,000	CIL/Parish Council/		Surrey County Council
	High Street/Plough Road/Dormans Road/Hollow Lane junction improvement and traffic calming.	Desirable	Parish Council Aspirations	£50,000	Parish Council/CIL		Surrey County Council
	Footway on B2028 Racecourse Road/Dormans Road (Racecourse Road between Dormans Road and Plough Road)	Desirable	Parish Council Aspirations	£150,000	S106 / Parish Council/CIL		Surrey County Council

Tandridge District Infrastructure Delivery Plan – January 2019

	Footway on Hollow Lane	Desirable	Parish Council Aspirations	£150,000	Parish Council		Surrey County Council
	Footway on Plough Road	Desirable	Parish Council Aspirations	£150,000	Parish Council		Surrey County Council
Education							
Health							
Recreation, Sport and Community Facilities							
	MUGA and Childrens play area at Dormansland Primary School	All	Local Plan/ Open Space Assessment	£200,000	Parish Council		Surrey County Council
Utilities / Broadband							
Flood Defence							
Green Infrastructure							

Felbridge Requirements							
Infrastructure Category	Infrastructure Scheme	Priority	Infrastructure Support	Total Estimated Infrastructure Cost (Higher)	Funding Arrangement	Site to contribute	Delivery Partner
Transport							
	Felbridge Road/Crawley Down Road Junction Improvements	All	Local Plan/ Surrey Local Transport Plan	£50,000	S106/S278/CIL	SES02	Surrey County Council
	Felbridge Traffic Calming	All	Local Plan/ Surrey Local Transport Plan	£100,000	S106/S278/CIL	SES02	Surrey County Council
	Felbridge A264/Crawley Down Road Signalization of Junction	All	Surrey Local Transport Plan	£150,000	S106/CIL		Surrey County Council
	Felbridge A264/Crawley Down Road Pedestrian improvements	All	Surrey Local Transport Plan	£300,000	S106/S278/CIL	TBC	Surrey County Council
	A264/A22 Speed Cameras	All	Surrey Local Transport Plan	£80,000	TBC	TBC	Surrey County Council
	A264/A22 - Crawley Down Road Cycle Network	All	Surrey Local Transport Plan	£200,000	TBC	TBC	Surrey County Council

Tandridge District Infrastructure Delivery Plan – January 2019

	Pedestrian facilities on A22/A264 Cophorne Road Junction and Mill Lane	All	Local Plan/ Surrey Local Transport Plan	£100,000	S106/S278/Parish Council/CIL	TBC	Surrey County Council
	Improvements to Crawley Down Road footpath lighting	All	Surrey Local Transport Plan	£50,000	Parish Council/CIL		Surrey County Council
Education							
Health							
Recreation, Sport and Community Facilities							
Flood Defence							
Utilities / Broadband							
Green Infrastructure							

Godstone Requirements							
Infrastructure Category	Infrastructure Scheme	Priority	Infrastructure Support	Total Estimated Infrastructure Cost (Higher)	Funding Arrangement	Site to contribute	Delivery Partner
Transport							
	Footway on A22 and Tilburstow Hill Road in South Godstone	All	Local Plan/ Surrey Local Transport Plan	£150,000	S106/ Parish Council		Surrey County Council
	Footway/ cycleway A22 Godstone Road	All	Local Plan/ Surrey Local Transport Plan	£150,000	Surrey County Council/S106/ Parish Council	IES04	Surrey County Council
Education							
Health							
	<i>See Garden Community Requirements</i>						
Recreation, Sport and Community Facilities							
	Allotment Provision	All	Local Plan	£100,000	TDC / Parish Council		Tandridge District Council/Parish Council
	Youth Provision	All	Local Plan	£250,000	TDC / Parish Council		Tandridge District

Tandridge District Infrastructure Delivery Plan – January 2019

							Council/Parish Council
Utilities / Broadband							
Flood Defence							
Green Infrastructure							

Horne Requirements							
Infrastructure Category	Infrastructure Scheme	Priority	Infrastructure Support	Total Estimated Infrastructure Cost (Higher)	Funding Arrangement	Site to contribute	Delivery Partner
Transport							
Education							
Health							
Recreation, Sport and Community Facilities							
	Upgrades to Cricket Ground	All	Playing Pitch Strategy	TBC	TDC/Parish Council		Tandridge District Council/Parish Council
	Upgrades to Park and Recreation Ground to incorporate other facilities	All	Open Space Assessment	£300,000	TDC/Parish Council		Tandridge District Council/Parish Council
Utilities / Broadband							
Flood Defence							
Green Infrastructure							

Limpsfield Requirements							
Infrastructure Category	Infrastructure Scheme	Priority	Infrastructure Support	Total Estimated Infrastructure Cost (Higher)	Funding Arrangement	Site to contribute	Delivery Partner
Transport							
	Wolf Hill Footpath	Desirable	Parish Council/ Ward Member Aspiration	£250,000	Parish Council		Surrey County Council
	Parking Facilities	Desirable	Parish Council	£50,000	Parish Council		Surrey County Council
	Bluehouse Lane - new footway	All	Surrey Local Transport Plan/ Parish Council/Ward Member Aspiration	£150,000	Surrey County Council/ Parish Council		Surrey County Council
	Junction improvements at A25 Westerham Road junction with B269 High Street Limpsfield/Wolfs Row.	All	Local Plan	£500,000	S278 / S106 / Parish Council/CIL	SES04	Surrey County Council
	Improvement to access at Moorhouse Tileworks	1-5	Local Plan	£500,000	S106 / S278	SES04	Surrey County Council
Education							

Tandridge District Infrastructure Delivery Plan – January 2019

Health							
Recreation, Sport and Community Facilities							
	High Street Playing Field - Upgrade to a park/recreation ground accommodating other facilities children's and/or youth play space.	All	Local Plan	£300,000	TDC/Parish Council		Tandridge District Council/Parish Council
Utilities / Broadband							
Flood Defence							
Green Infrastructure							

Lingfield Requirements							
Infrastructure Category	Infrastructure Scheme	Priority	Infrastructure Support	Total Estimated Infrastructure Cost (Higher)	Funding Arrangement	Site to contribute	Delivery Partner
Transport							
	Race Day Traffic Management Plan	All	Surrey Local Transport Plan	£10,000	Lingfield Park Racecourse		Surrey County Council
	Quite Lanes/Rural Enhancement Scheme	All	Surrey Local Transport Plan	£80,000	TBC		Surrey County Council
	HGV Signage to Industrial Areas	All	Surrey Local Transport Plan	£50,000	TBC		Surrey County Council
	Crowhurst Road - Station Road Footpath	All	Surrey Local Transport Plan/ Parish Council	£50,000	CIL/Parish Council		Surrey County Council
	Mobility Impaired Persons bridge at Lingfield Station	1 – s/6-10	Local Plan / Network Rail Plan?	£3,500,000	Network Rail/S106	HSG12	Network Rail
	Car Park Provision at Station Road/Town Hill	1-5/6 - 10	Local Plan	£5,000,000	S106/TDC Acquisition	HSG12	Tandridge District Council

Tandridge District Infrastructure Delivery Plan – January 2019

Education							
Health							
	Lingfield Surgery Rebuild	1-5/6 - 10	Local Plan/CCG Estates Plan/ Parish Council	£7,500,000	S106/CCG/ NHS	HSG12	CCG/NHS
Recreation, Sport and Community Facilities							
	Provision of open space	1 - 5	Local Plan	£300,000	S106	HSG12	Tandridge District Council/Parish Council
Utilities / Broadband							
Flood Defence							
Green Infrastructure							

Nutfield Requirements							
Infrastructure Category	Infrastructure Scheme	Priority	Infrastructure Support	Total Estimated Infrastructure Cost (Higher)	Funding Arrangement	Site to contribute	Delivery Partner
Transport							
	Traffic Calming along A25	All	Local Plan	£50,000	S278 / s106	IES05/ IES07	Surrey County
	Bus Stops - Mid Street in both directions	Desirable	Parish Council Aspiration	£20,000	/Bus Operator/ Parish Council		Bus Operator/Parish Council
	Bus Stops - Kentwyns Rise	Desirable	Parish Council Aspiration	£20,000	/Bus Operator/ Parish Council		Bus Operator/Parish Council
	Bus Stops – South Nutfield Station	Desirable	Parish Council Aspiration	£20,000	/Bus Operator/ Parish Council		Bus Operator/Parish Council
	Bus Stops - Ridge Green	Desirable	Parish Council Aspiration	£20,000	/Bus Operator/ Parish Council		Bus Operator/Parish Council
	Bus Stops - Kings Cross Lane	Desirable	Parish Council Aspiration	£20,000	/Bus Operator/ Parish Council		Bus Operator/Parish Council
	Additional Parking (6 – 8 spaces) at	Desirable	Parish Council Aspiration	£30,000	/TOC/ Parish Council		Parish Council/Train Operating Company

Tandridge District Infrastructure Delivery Plan – January 2019

	Nutfield Station						
Education							
Health							
Recreation, Sport and Community Facilities							
	Park and Recreation provision	All	Open Space Assessment	£400,000	TDC/ Parish Council		Tandridge District Council/Parish Council
Utilities / Broadband							
	Broadband Improvements	Desirable	Parish Council Aspiration	£2,000,000	Network Provider		Network Provider
Flood Defence							
	Culvert Improvements – Nutfield Brook / Mid Street	All	Surrey Infrastructure Plan/ Parish Council Aspiration	£1,000,000	CIL		Surrey County Council/Environment Agency/Tandridge District Council
Green Infrastructure							

Outwood Requirements							
Infrastructure Category	Infrastructure Scheme	Priority	Infrastructure Support	Total Estimated Infrastructure Cost (Higher)	Funding Arrangement	Site to contribute	Delivery Partner
Transport							
Education							
Health							
Recreation, Sport and Community Facilities							
	Upgrade amenity space adjacent to Lloyd Hall Park and Recreation Ground to incorporate Park area and accommodate allotment and food growing area	All	Local Plan	£400,000	TDC/Parish Council		Tandridge District Council/Parish Council
Utilities / Broadband							
Flood Defence							

Tandridge District Infrastructure Delivery Plan – January 2019

	Outwood Lane Drainage	All	Surrey Infrastructure Plan	£375,000	CIL		Surrey County Council
Green Infrastructure							

Oxted Requirements							
Infrastructure Category	Infrastructure Scheme	Priority	Infrastructure Support	Total Estimated Infrastructure Cost (Higher)	Funding Arrangement	Site to contribute	Delivery Partner
Transport							
	Mill Lane/Hurst Green Road Improvements	6 - 10	Surrey Local Transport Plan/ Ward Members Aspiration	£150,000	S106 / Parish Council / S278	HSG14	Surrey County Council
	A25/Church Lane Signalised Junction	All	Surrey Local Transport Plan/ Ward Members Aspiration	£150,000	Parish Council /S106 / S278 /CIL	TLP2	Surrey County Council
	Speed Limit Reduction West of Oxted	All	Surrey Local Transport Plan/ Ward Members Aspiration	£35,000	Surrey County Council / Parish Council/CIL		Surrey County Council
	Cyclist/Pedestrian Refuge West of Old Oxted High Street	All	Surrey Local Transport Plan/ Ward Members Aspiration	£50,000	CIL/Parish Council		Surrey County Council
	Hurst Green Station Car Parking increase in capacity	All	Local Plan	TBC	S106 / GTR / Network Rail	HSG13/ HSG14	Network Rail/Train Operating Company

Tandridge District Infrastructure Delivery Plan – January 2019

	Footpath improvements and widening along Woodhurst Lane	All	Surrey Local Transport Plan		CIL/ Parish Council /S106 /S278	TLP2	Surrey County Council
				£80,000			
	Mill Lane - Footpath extension	1-5	Surrey Local Transport Plan/ Ward Members Aspiration		S106/ Parish Council /S278/CIL	HSG13	Surrey County Council
				£100,000			
	Pedestrian crossing on Pollards Oak Road	1-5	Surrey Local Transport Plan/ Ward Members Aspiration		S106/ Parish Council /S278/CIL	HSG13	Surrey County Council
				£150,000			
	Cycle Route from Holland to Hurst Green Station	1 – 5/6 - 10	Local Plan	TBC	S106 / S278/CIL	HSG13/ HSG14	Surrey County Council
Education							
	St Marys Primary School 1FE Expansion	1 - 5	Local Plan/ Surrey Planning for School Places		Surrey County Council / CIL		Surrey County Council
				£4,000,000			
	Potential re-provision of Holland Infant to provide a through school with Holland Junior	All	Local Plan		CIL/S106	HSG13	Surrey County Council
				£7,500,000			

Tandridge District Infrastructure Delivery Plan – January 2019

	1FE expansion of infant provision in Oxted & Limpsfield area	All	Local Plan	£3,500,000	Surrey County Council / CIL		Surrey County Council
Health							
	Oxted Health Centre Surgery	All	Local Plan/ CCG Estates Plan	£1,200,000	CIL/CCG		CCG/NHS
Recreation, Sport and Community Facilities							
	Oxted Library Refurbishment	Desirable	Surrey Infrastructure Study	TBC	Surrey County Council / S106	HSG13	Surrey County Council
	Multi Use Sports Hall and x2 Consultation Rooms	All	Local Plan	£1,000,000	Freedom Leisure/ S106/ Lottery Funding/ Sport England	HSG13/ HSG14/ TLP2	Tandridge District Council/Private Sector
	Playground Improvements Warren Lane Park	1-5/6 - 10	Local Plan	£50,000	TDC/S106	HSG13/ HSG14	Tandridge District Council
	Playground Improvements - Mill Lane Recreation Ground	1-5/6 - 10	Local Plan	£30,000	TDC / S106	HSG13/ HSG14	Tandridge District Council

Tandridge District Infrastructure Delivery Plan – January 2019

	Allotment provision	1-5/6 - 10	Local Plan	£100,000	Parish Council / S106	HSG13/ HSG14	Tandridge District Council/Parish Council
	Youth play space	1-5/6 - 10	Local Plan	£250,000	TDC / S106	HSG13/ HSG14	Tandridge District Council
Utilities / Broadband							
	Mains Sewerage – Merle Common	Desirable	Ward Member Aspiration	TBC	Southern Water		Southern Water
	Mains Gas – Merle Common	Desirable	Ward Member Aspiration	TBC	SGN		SGN
Flood Defence							
	Coltsfoot Lane – surface water flood alleviation	All	Ward Member Aspiration	£1,000,000	Environment Agency / Surrey County Council/CIL		Surrey County Council/Tandridge District Council
Green Infrastructure							

Tandridge District Infrastructure Delivery Plan – January 2019

Tandridge (Parish) Requirements							
Infrastructure Category	Infrastructure Scheme	Priority	Infrastructure Support	Total Estimated Infrastructure Cost (Higher)	Funding Arrangement	Site to contribute	Delivery Partner
Transport							
Education							
	Expansion of St Peter's C of E school to all through primary	1 – 5/6-10	Local Plan	£3,500,000	CIL / School/ Diocese		Surrey County Council
Health							
Recreation, Sport and Community Facilities							
	Expansion of playspace adjacent to St Peter's C of E School.	1-5/6 - 10	Local Plan/Open Space Assessment	£50,000	TDC / Parish Council		Tandridge District Council
	Millennium Field provision of food growing area	All	Local Plan/ Open Space Assessment	£100,000	TDC/Parish Council		Tandridge District Council
Utilities / Broadband							

Tandridge District Infrastructure Delivery Plan – January 2019

Flood Defence							
Green Infrastructure							

Tatsfield Requirements							
Infrastructure Category	Infrastructure Scheme	Priority	Infrastructure Support	Total Estimated Infrastructure Cost (Higher)	Funding Arrangement	Site to contribute	Delivery Partner
Transport							
Education							
Health							
Recreation, Sport and Community Facilities							
	Westmore Green upgrade to a park and recreation ground to include expansion of existing childrens playground	All	Local Plan	£100,000	TDC/Parish Council		Tandridge District Council/Parish Council
Utilities / Broadband							
Flood Defence							
Green Infrastructure							

Titsey Requirements							
Infrastructure Category	Infrastructure Scheme	Priority	Infrastructure Support	Total Estimated Infrastructure Cost (Higher)	Funding Arrangement	Site to contribute	Delivery Partner
Transport							
	Titsey Road (B269) Traffic Calming / Resurfacing Improvements	All	Surrey Local Transport Plan/Parish Council Aspiration	TBC	CIL/Parish Council		Surrey County Council
Education							
Health							
Recreation, Sport and Community Facilities							
Utilities / Broadband							
	Broadband Improvements	Desirable	Parish Council/ Ward Member Aspiration	TBC	Network Provider		Network Provider
Flood Defence							
Green Infrastructure							

Warlingham Requirements							
Infrastructure Category	Infrastructure Scheme	Priority	Infrastructure Support	Total Estimated Infrastructure Cost (Higher)	Funding Arrangement	Site to contribute	Delivery Partner
Transport							
	Sunny Bank - Congestion Alleviation	1-5/6-10	Local Plan	£50,000	CIL/S106/S278	HSG16 HSG17	Surrey County Council
	Hillbury Road Traffic Calming	1-5/6-10	Local Plan	£100,000	CIL /S106/S278	HSG15 HSG18	Surrey County Council
	Pedestrian Crossing between Warlingham Green and Trenham Drive	1-5/6-10	Local Plan	£150,000	CIL S106/S278	HSG15 HSG18	Surrey County Council
	Road Widening at Crewes Close & Install Parking Bays	All	Surrey Local Transport Plan	£100,000	TBC		Surrey County Council
	Tithepit Shaw Lane - kerb build out and informal crossing point	1-5/6-10	Surrey Local Transport Plan	£15,000	CIL/Local Committee/S106/S278	HSG15/ HSG18	Surrey County Council

Tandridge District Infrastructure Delivery Plan – January 2019

	Additional off-street park in the vicinity of The Green	Desirable	Parish Council/ Ward Member Aspiration	TBC	Parish Council		Parish Council
	Bus stop shelter & real time information The Green (north side, Chelsham bound)	Desirable	Parish Council/ Ward Member Aspiration	£20,000	Parish Council / Bus Operators		Parish Council/Bus Operators
	The Green - improvements to road, pavement surfacing and crossings with associated street lighting and street furniture	Desirable	Parish Council/ Ward Member Aspiration	£400,000	Parish Council		Parish Council
	Cycle Route from Warlingham Green to Upper Warlingham Station	1-5/6-10	Surrey Local Transport Plan	TBC	CIL/S106/S278	HSG15 HSG17 HSG18	Surrey County Council
Education							

Tandridge District Infrastructure Delivery Plan – January 2019

	Warlingham Primary school expansion and Re provision to provide a total of (2FE) (Developer to provide serviced land at nil cost and transfer to Surrey County Council)	1-5	Local Plan	£9000,000	Surrey County Council (DFE Capital Funding)/S106	HSG15	Surrey County council
Health							
	GP Surgery expansion	1-5	Local Plan/ CCG Estates Plan	£60,000	S106	HSG15	CCG/NHS
	Dentist provision	Desirable	Parish Council Aspiration	TBC	Private Investment/ NHS England		Private Sector
Recreation, Sport and Community Facilities							
	Indoor Sports Hall	All	Local Aspirations/ Local Plan	£1,000,000	Freedom Leisure/ TDC/ Private Investment	HSG17	Tandridge District Council /Private Sector

Tandridge District Infrastructure Delivery Plan – January 2019

	Youth Play space at Hamsey Green or Warlingham Park	1-5/6 - 10	Local Plan		S106 / Tandridge District Council	HSG15	Tandridge District Council
				£30,000			
	Amenity Green Space provision	1-5/6 - 10	Local Plan		S106/ Tandridge District Council		Tandridge District Council
				£30,000			
Utilities / Broadband							
Flood Defence							
	Remediation work at The Green	Desirable	Parish Council Aspiration	TBC	TBC		Parish Council
Green Infrastructure							

Whyteleafe Requirements							
Infrastructure Category	Infrastructure Scheme	Priority	Infrastructure Support	Total Estimated Infrastructure Cost (Higher)	Funding Arrangement	Site to contribute	Delivery Partner
Transport							
	Whyteleafe Roundabout Approaches Remodelling	All	Surrey Local Transport Plan	£400,000	CIL /s106/S278	SES01	Surrey County Council
	Wapses Lodge Roundabout – Signalising, landscaping, pedestrian crossing and flood works	All	Caterham Masterplan	£7,100,000	CIL	TLP28/SES01	Surrey County Council
	Bus stop shelter & real time information opposite Bourne House, Godstone Road (northbound)	Desirable	Parish Council/Ward Member Aspiration	£20,000	Parish Council		Bus Operator/Parish Council
	Bus stop shelter & Real time information Hillside Road, Godstone Road (southbound)	Desirable	Parish Council/Ward Member Aspiration	£20,000	Parish Council		Bus Operator/Parish Council

Tandridge District Infrastructure Delivery Plan – January 2019

	Bus stop shelter & real time information Opposite Maple Road (northbound Godstone Road)	Desirable	Parish Council/Ward Member Aspiration	£20,000	Parish Council		Bus Operator/Parish Council
	Succombs Hill - introduction of one-way flow	Desirable	Parish Council/Ward Member Aspiration	TBC	CIL		Surrey County Council
	Pedestrian crossing on Godstone Road - north of Hillside Road	Desirable	Parish Council/Ward Member Aspiration	£150,000	Parish Council / CIL		Surrey County Council
	Paving Improvements and installation of dropped kerbs - Godstone Road between Maple Road and Hillbury Road	Desirable	Parish Council/Ward Member Aspiration	TBC	Parish Council		Surrey County Council

Tandridge District Infrastructure Delivery Plan – January 2019

	Church Road - Pavement extension along whole of road.	Desirable	Parish Council/Ward Member Aspiration	£300,000	Parish Council		Surrey County Council
	Increased parking provision at Whyteleafe Station	Desirable	Parish Council/Ward Member Aspiration	TBC	Network Rail/TOC		Network Rail/Train Operating Company
	Increased parking provision at Upper Warlingham Station	Desirable	Parish Council/Ward Member Aspiration	TBC	Network Rail/TOC		Network Rail/Train Operating Company
Education							
Health							
	Whyteleafe Surgery extension	1-5/6-10	CCG Estates Plan/ Local Plan	£2,000,000	CIL/NHS		CCG/NHS
Recreation, Sport and Community Facilities							
	Studio	Desirable	Parish Council/ Ward Member Aspiration	£150,000	Freedom Leisure/ Sport England / Lottery		Private Sector/Public sector

Tandridge District Infrastructure Delivery Plan – January 2019

					Funding/Parish Council		
	Wet weather/shade shelter at Whyteleafe Recreation Ground near to the playground	Desirable	Parish Council/ Ward Member Aspiration	£10,000	Parish Council		Parish Council
	Community Hall facility	Desirable	Parish Council/ Ward Member Aspiration	£400,000	Parish Council/Lottery Funding		Private Sector/Public Sector
	Caterham & Whyteleafe Tennis Club court improvements	Desirable	Parish Council/ Ward Member Aspiration	£400,000	Parish Council/Lottery Funding		Private Sector/Public Sector
	Provision of allotments	All	Open Space Assessment	TBC	TDC/Parish Council		Tandridge District Council/Parish Council
Utilities / Broadband							
Flood Defence							

Tandridge District Infrastructure Delivery Plan – January 2019

	Caterham Bourne Flood Alleviation Scheme (see <i>Caterham Valley</i>)						
	A22/Hillbury Roundabout drainage	All	Surrey Infrastructure Study	TBC	CIL/SCC		
Green Infrastructure							
	Public realm improvements between Whyteleafe South railway station and Wapses Lodge roundabout	Desirable	Parish Council/ Ward Member Aspiration	£15,000	Parish Council		Parish Council
	Public realm improvements to main shopping area to include paving, street furniture and planting	Desirable	Parish Council/ Ward Member Aspiration	TBC	Parish Council		Parish Council
	Pocket Park at Chandlers Building (opposite Maple Road)	Desirable	Parish Council/ Ward Member Aspiration	TBC	Parish Council		Parish Council

Woldingham Requirements							
Infrastructure Category	Infrastructure Scheme	Priority	Infrastructure Support	Total Estimated Infrastructure Cost (Higher)	Funding Arrangement	Site to contribute	Delivery Partner
Transport							
Education							
Health							
Recreation, Sport and Community Facilities							
	Allotment Provision	Low	Open Space Assessment	TBC	TDC/Parch Council		Tandridge District Council/Parish Council
	Provision of youth play space	Low	Open Space Assessment	TBC	TDC/Parch Council		Tandridge District Council/Parish Council
Utilities / Broadband							
Flood Defence							
Green Infrastructure							